

Two-Staged Mixed Plug Flow Anaerobic Digester

**ACEEE FORUM
Des Moines, IA**

November 15, 2005

GHD, INC.
P.O. Box 97 • Chilton, WI 53014
920-849-9797 • Fax 920-849-9160
www.ghdinc.net • ddghd@tds.net

Biological System

- MANURE COLLECTION SYSTEM
- DIGESTER VESSEL
 - Plug-Flow Digester
 - First In, First Out
 - Acid Chamber
 - Methanogenic Chamber
- DIGESTER MIXING
 - Biogas Recirculation
- TEMPERATURE
 - 101°F

Our Patented System

- WASTE FROM NUMEROUS SOURCES
 - Dairy
 - Hog
 - Poultry
 - Beef
 - Municipal
 - Organic Processing
 - Vegetable / Food Processing
 - Industrial Biodegradable

Biogas Consumption

- 55 to 60% METHANE (CO_2 ~ 45%)
- 5 to 5.5 COWS TO PRODUCE 1 kWH
- GEN-SET PROVIDES ELECTRICITY & HEAT
- SMALL AMOUNT OF H_2S
- EXCESS BIOGAS IS FLARED

Digester Effluent

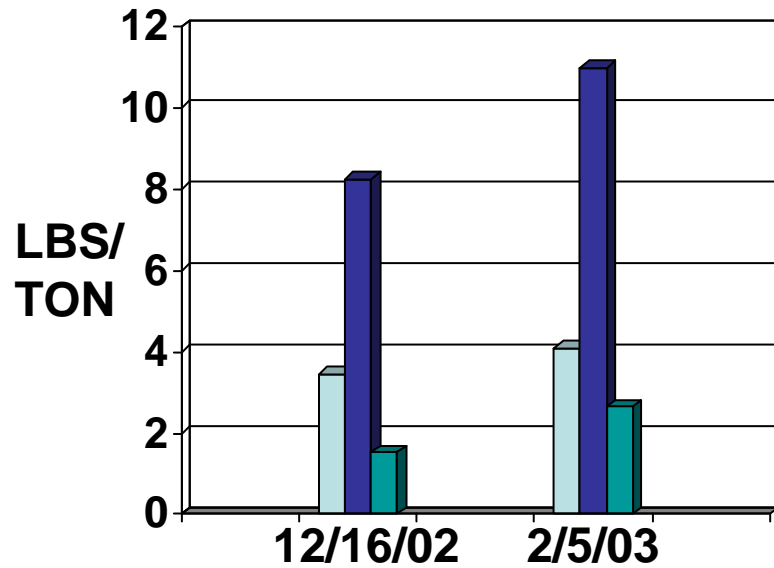
- SEPARATION W/ SCREW PRESS
- SOLIDS USED FOR QUALITY BEDDING
 - 65 to 70% Moisture
 - Pathogen Reduction
 - Clean Cows
 - Somatic Cell Count / Herd Health
 - Fly and Vector Control

Digester Effluent

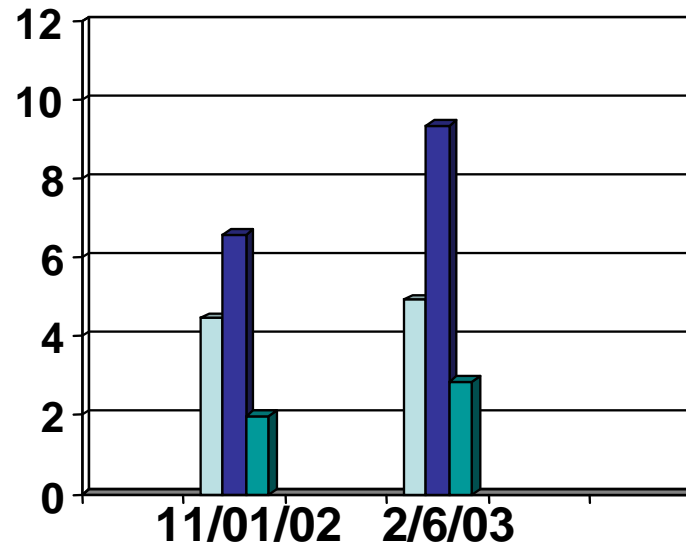
- LIQUID FOR INORGANIC FERTILIZER
 - 1.5 to 2% Solids
 - Irrigation vs. Trucking
 - Reduction in NPK

PHOSPHOROUS

DOUBLE "S" DAIRY



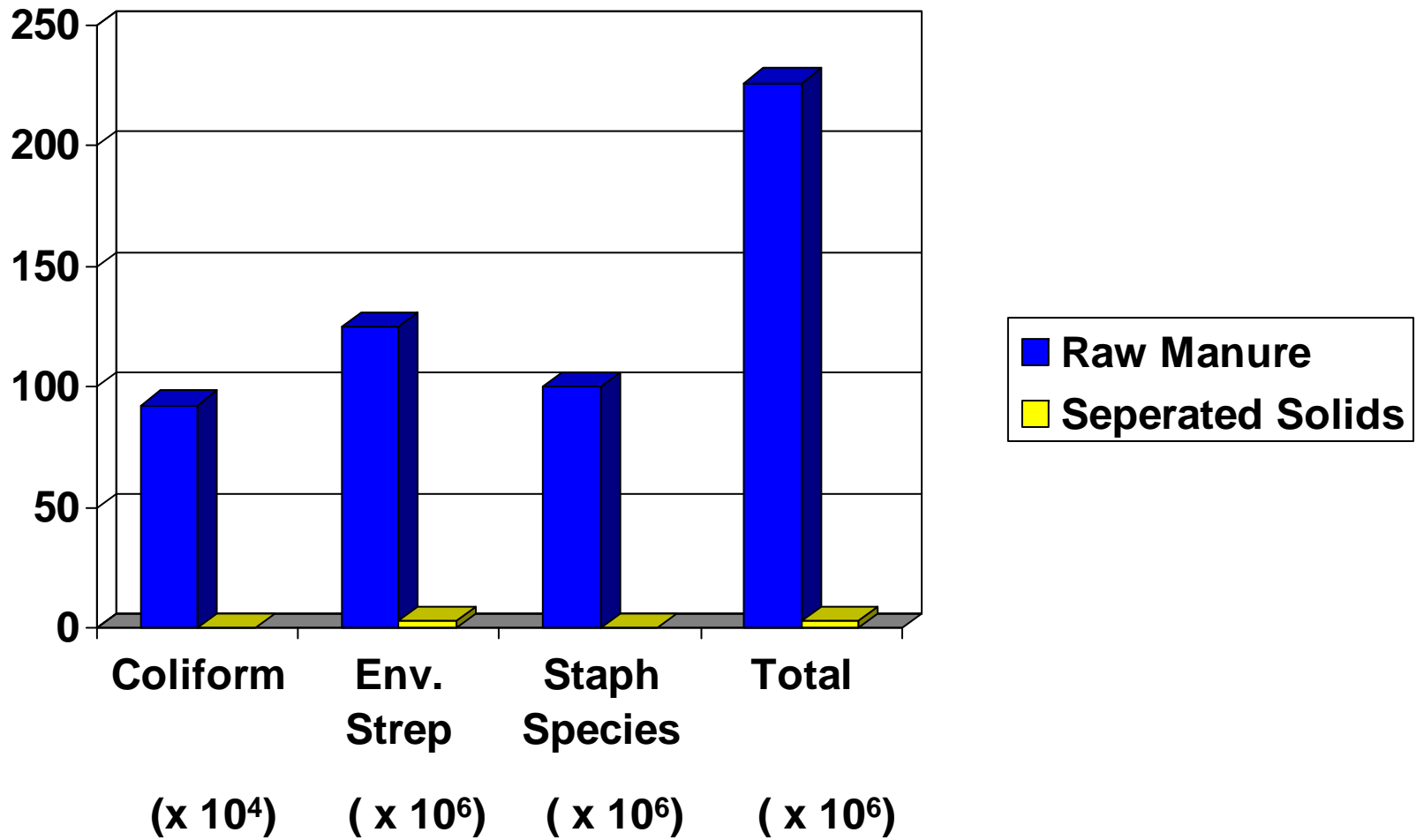
GORDONDALE FARMS



The above data was averaged to:

- Digester Influent at 10% Solids
- Separated Solids at 30% Solids
- Separated Liquids at 4% Solids

PATHOGEN REDUCTION Gordondale Farms



NOTE: SAMPLES COLLECTED 2/7/03

PROPERTY OF GHD, Inc.