

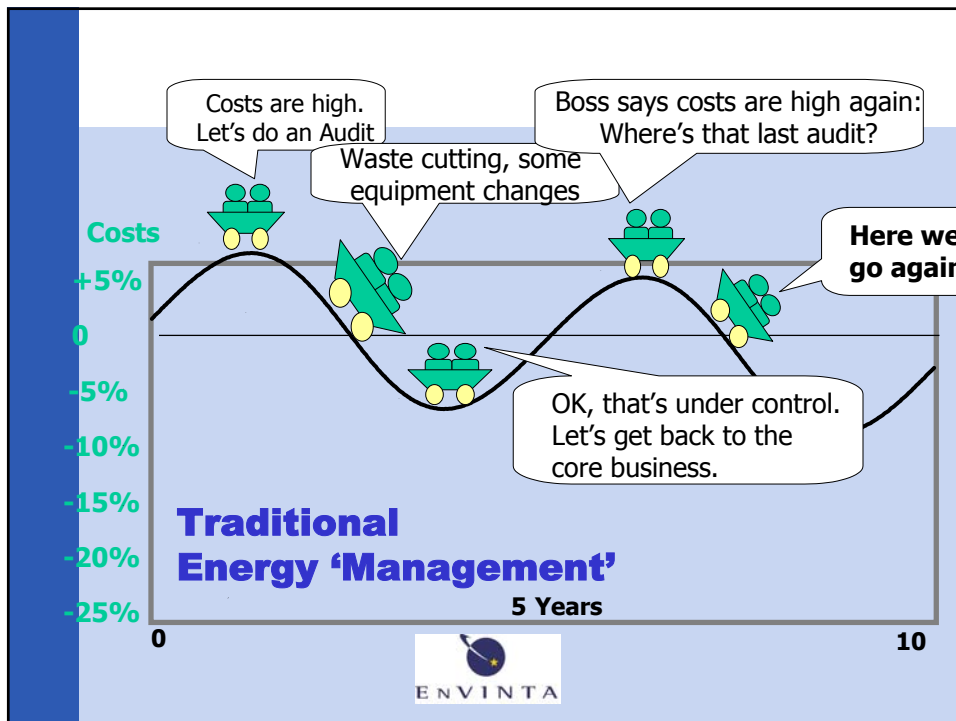


ONE-2-FIVE ENERGY

Management Practices for Energy Efficiency

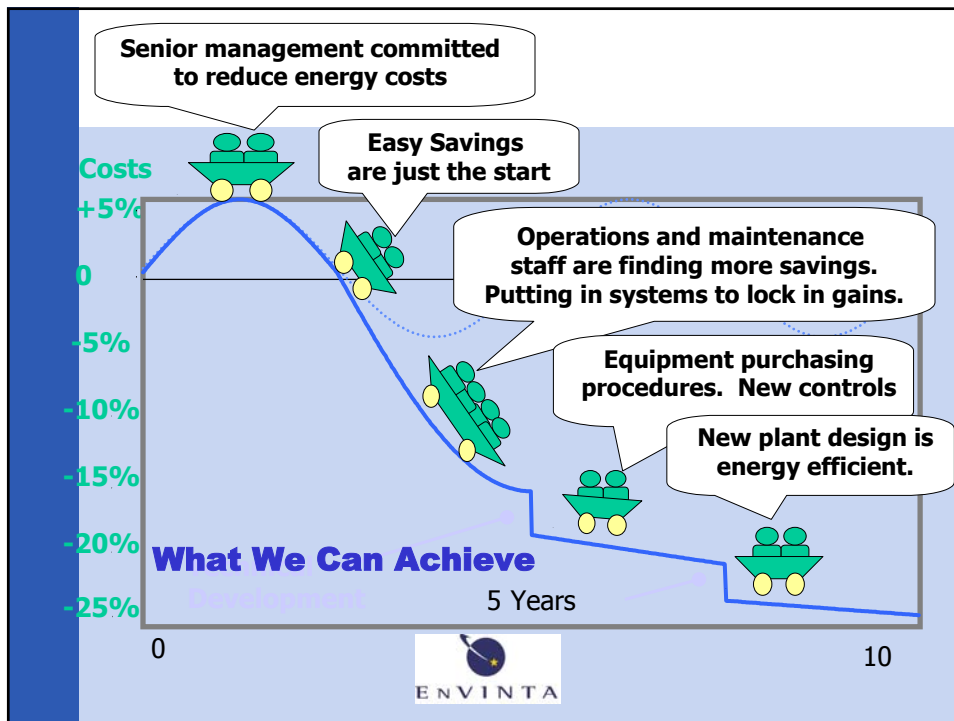
ACEEE Conference
April 2003

Jonathan Jutsen, CEO EnVinta
215 327 8301, JJutsen@EnVinta.com

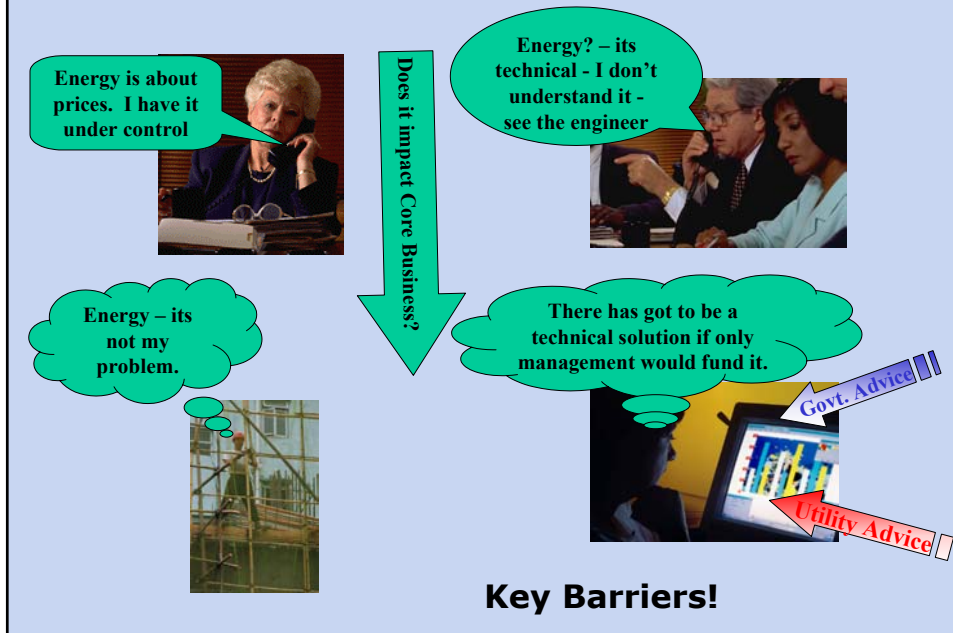


Need for a Complementary Approach

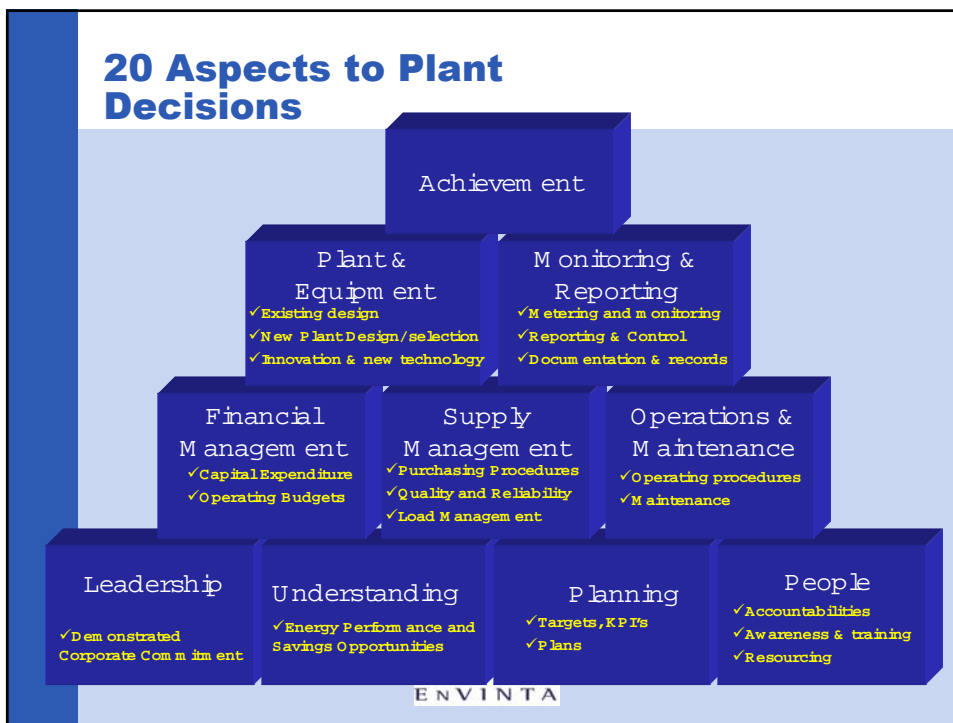
- Bring top management on board. Not highly technical. Energy as a business issue
- Line managers need incentive/responsibility. (Utility engineers lack authority over users).
- Promote continuous improvement.
- Build internal competency.
- Integrate energy with business objectives/culture. Energy as a chapter of improvement programs.
- Unlock savings pool through operational and maintenance savings at lower capital cost .



Bringing Top Management on Board



20 Aspects to Plant Decisions

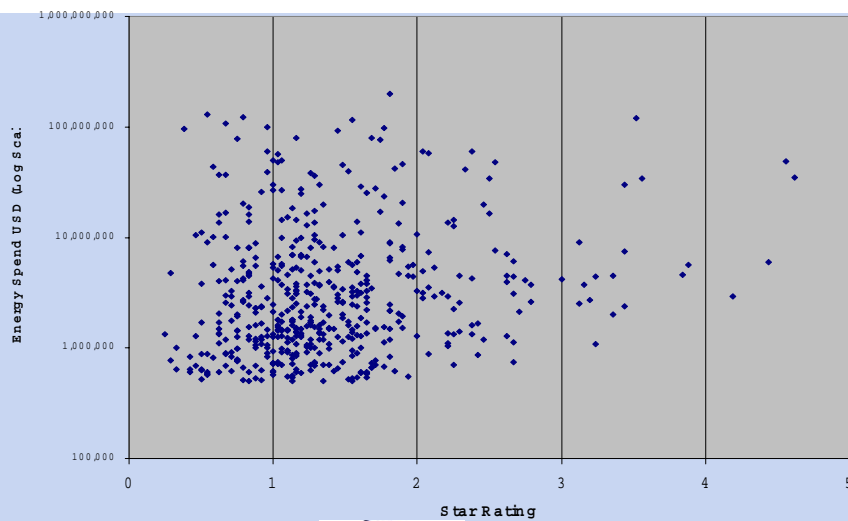


Steps Toward Best Practices

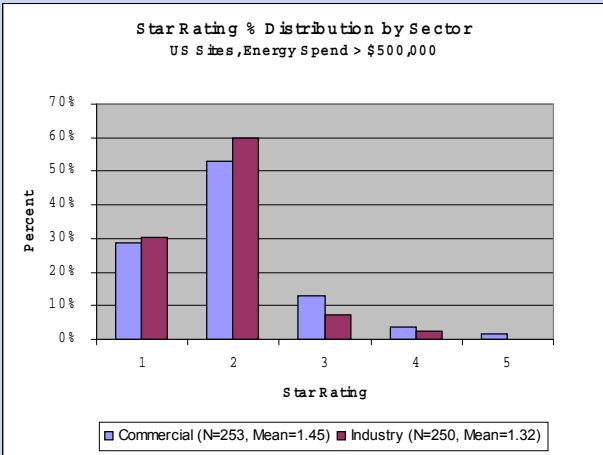
- ★ Need for Energy Waste Reduction Identified
- ★ ★ Energy Waste Reduction Practiced
- ★ ★ ★ Energy Management Systems Established
- ★ ★ ★ ★ Energy Integrated into Overall Business Systems
- ★ ★ ★ ★ ★ Continuous Improvement – “Best Practice”



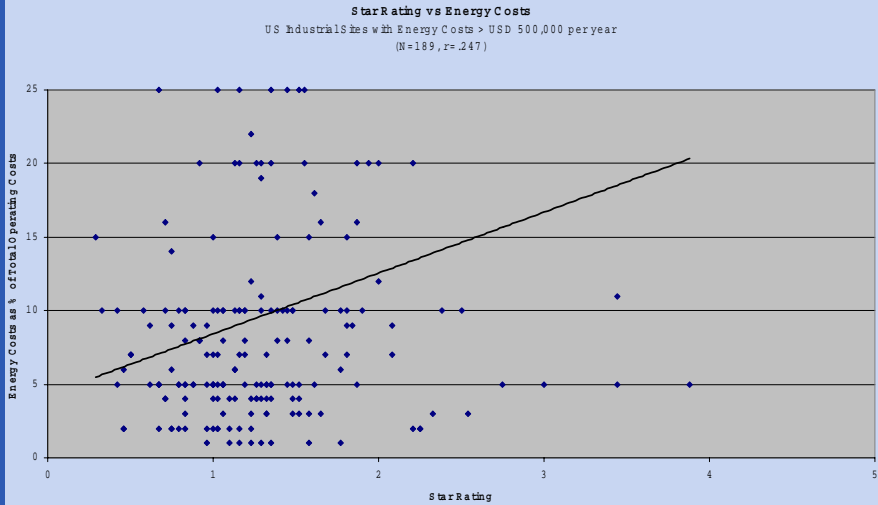
Star Rating vs. Energy Cost



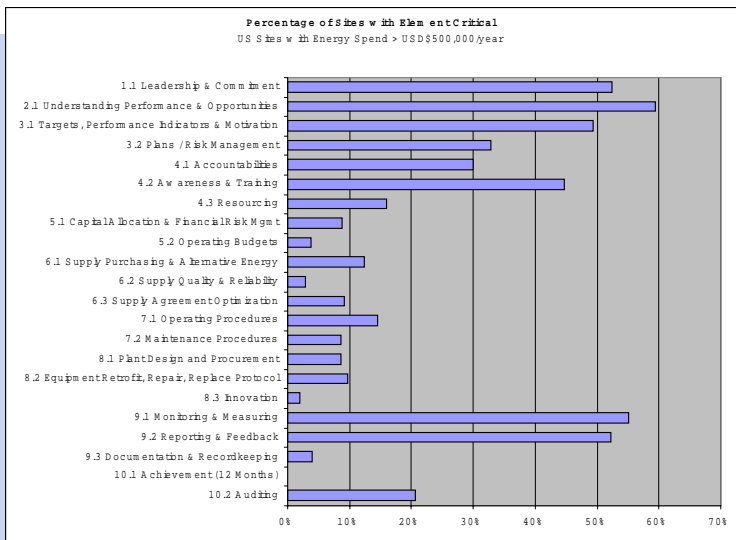
Only 10% of Industry > 2 Star



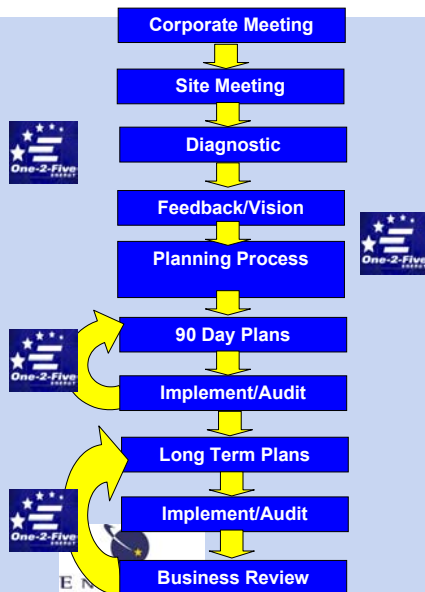
Star Rating vs. Energy Intensity



Critical Actions in US Companies



Driving Continuous Improvement





ONE-2-FIVE ENERGY

Contact Information

Jonathan Jutsen
CEO EnVinta
JJutsen@EnVinta.com
(215) 327-8301