

Effect of Water Heater Standards

Frank A. Stanonik
Chief Technical Advisor



we make life better™

Effect of Water Heater Standards

Revised residential water heater standards became effective April 2015

Several months of sell through but full effect is reflected in the market today

Implementation of July 2014 revised test procedure may add some effect

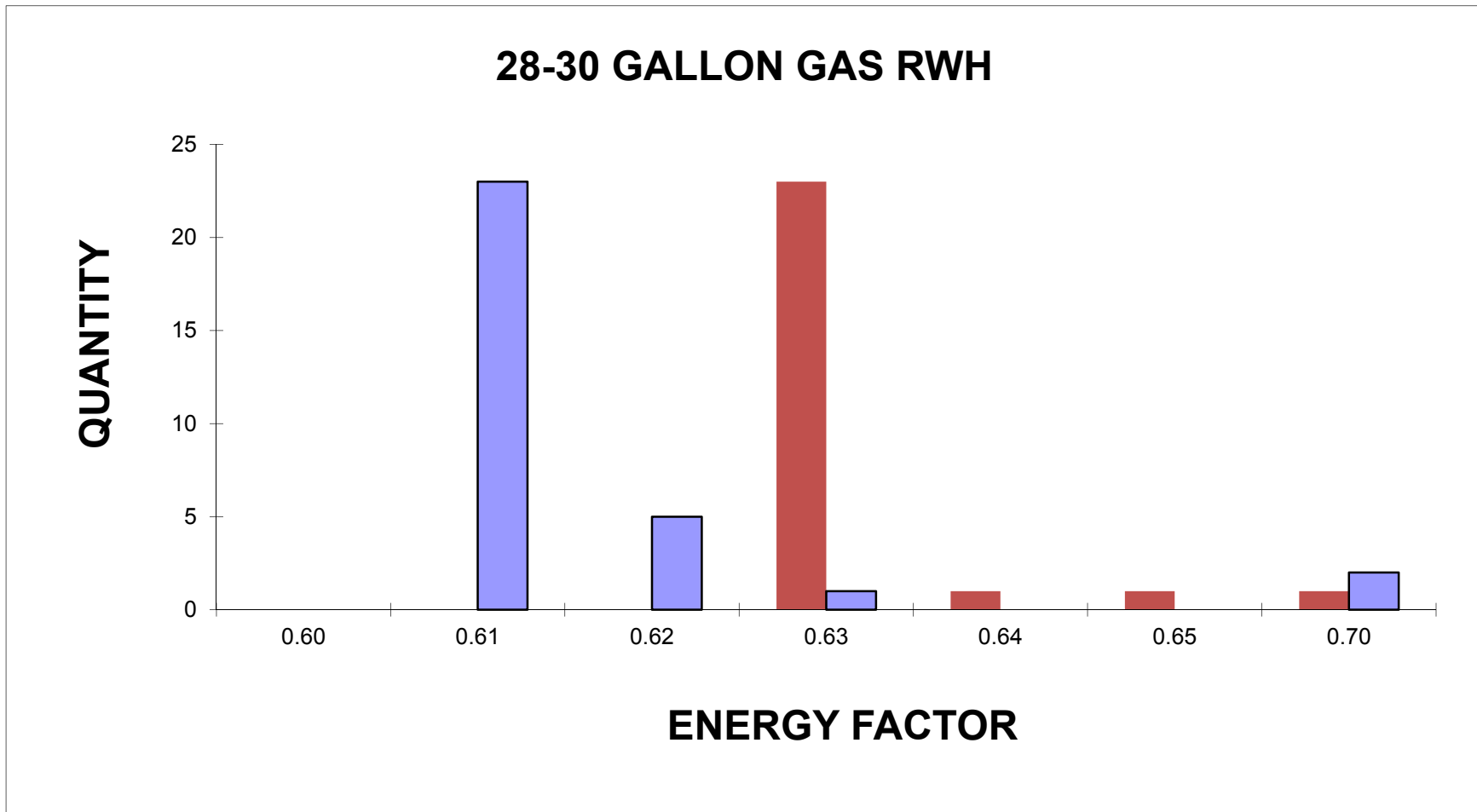
Effect of Water Heater Standards

Review of current storage model availability compared to February 2015

Review of shipment statistics for last half of 2015.

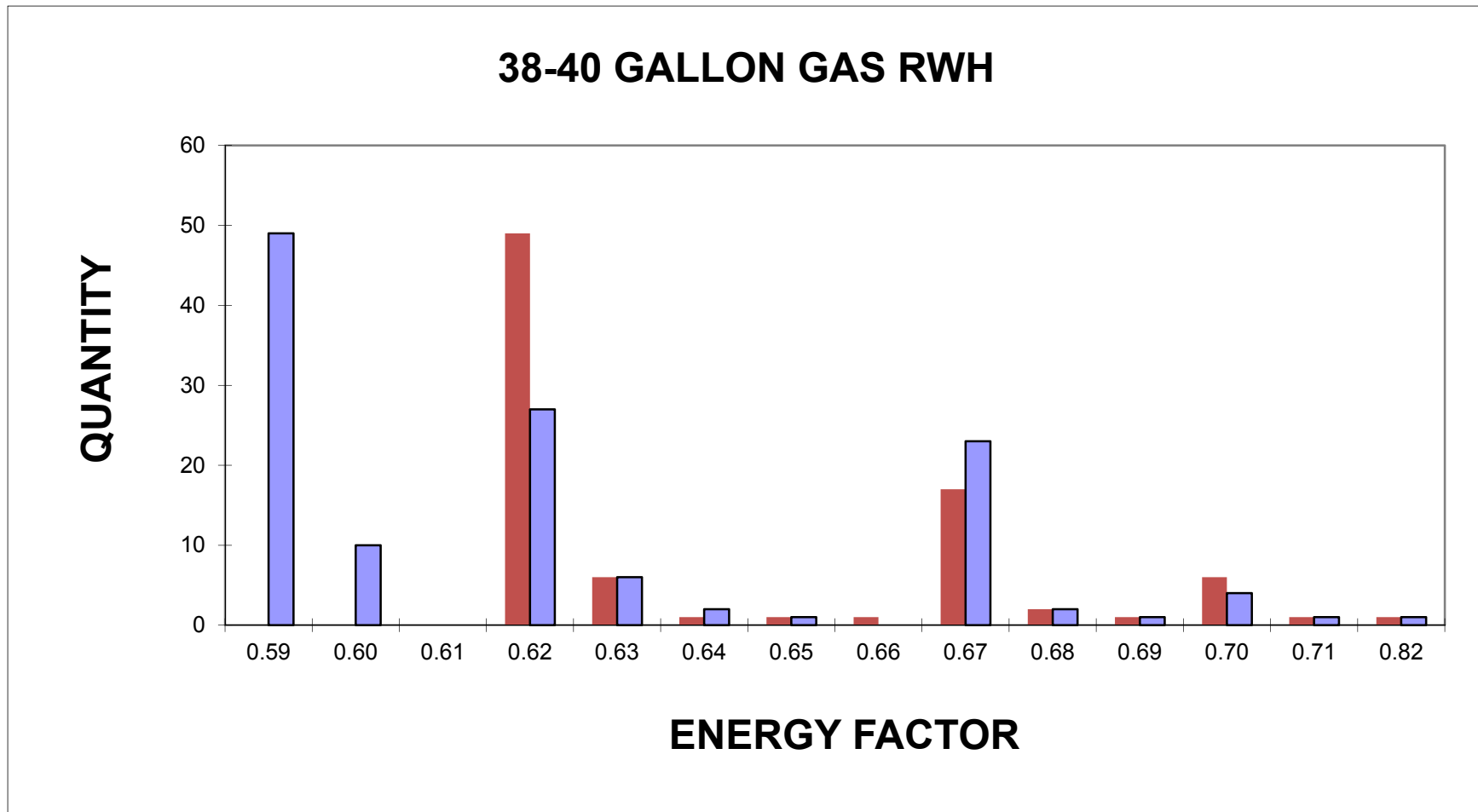
Model Availability by EF

Feb. 2015 vs. Feb.2016



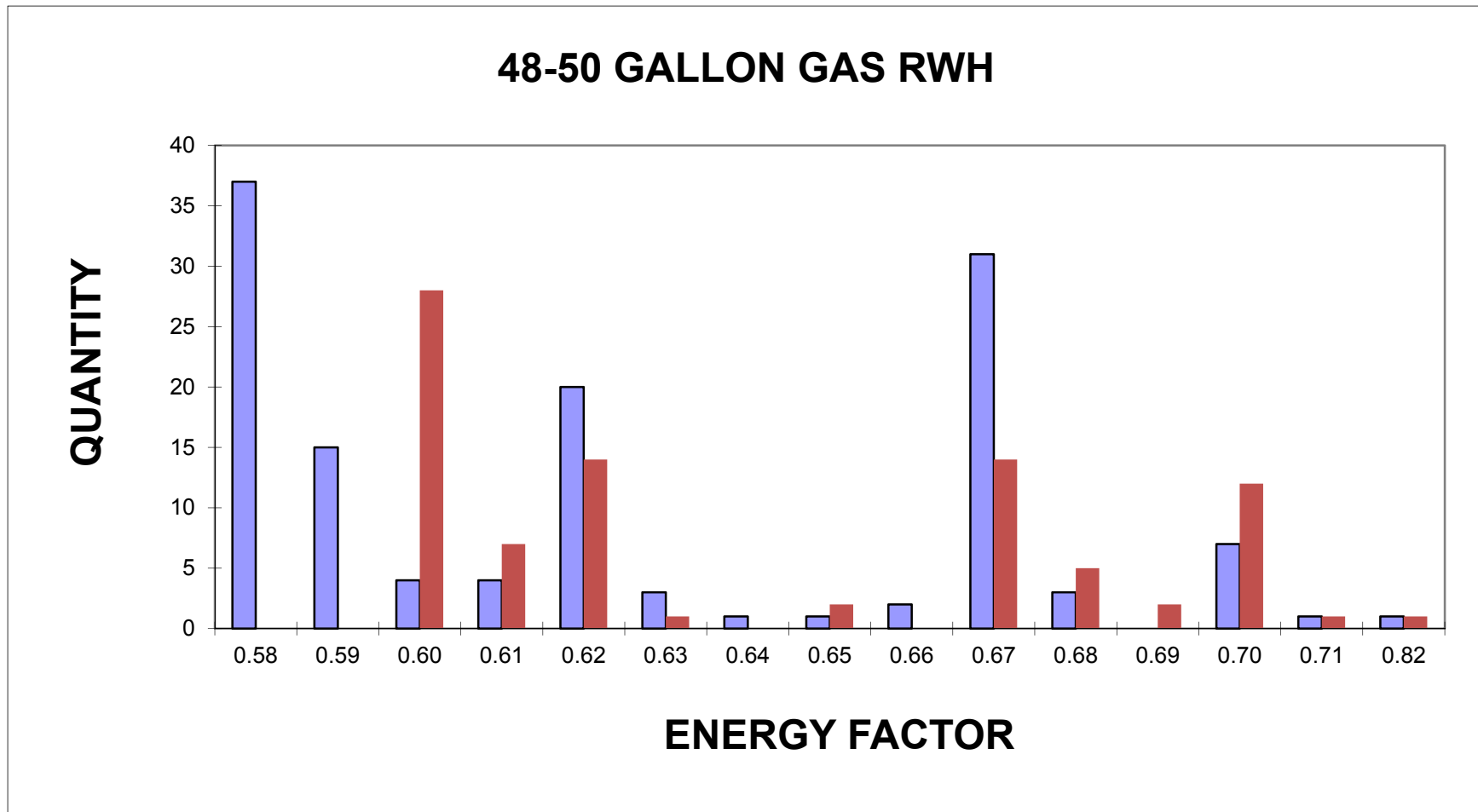
Model Availability by EF

Feb. 2015 vs. Feb. 2016

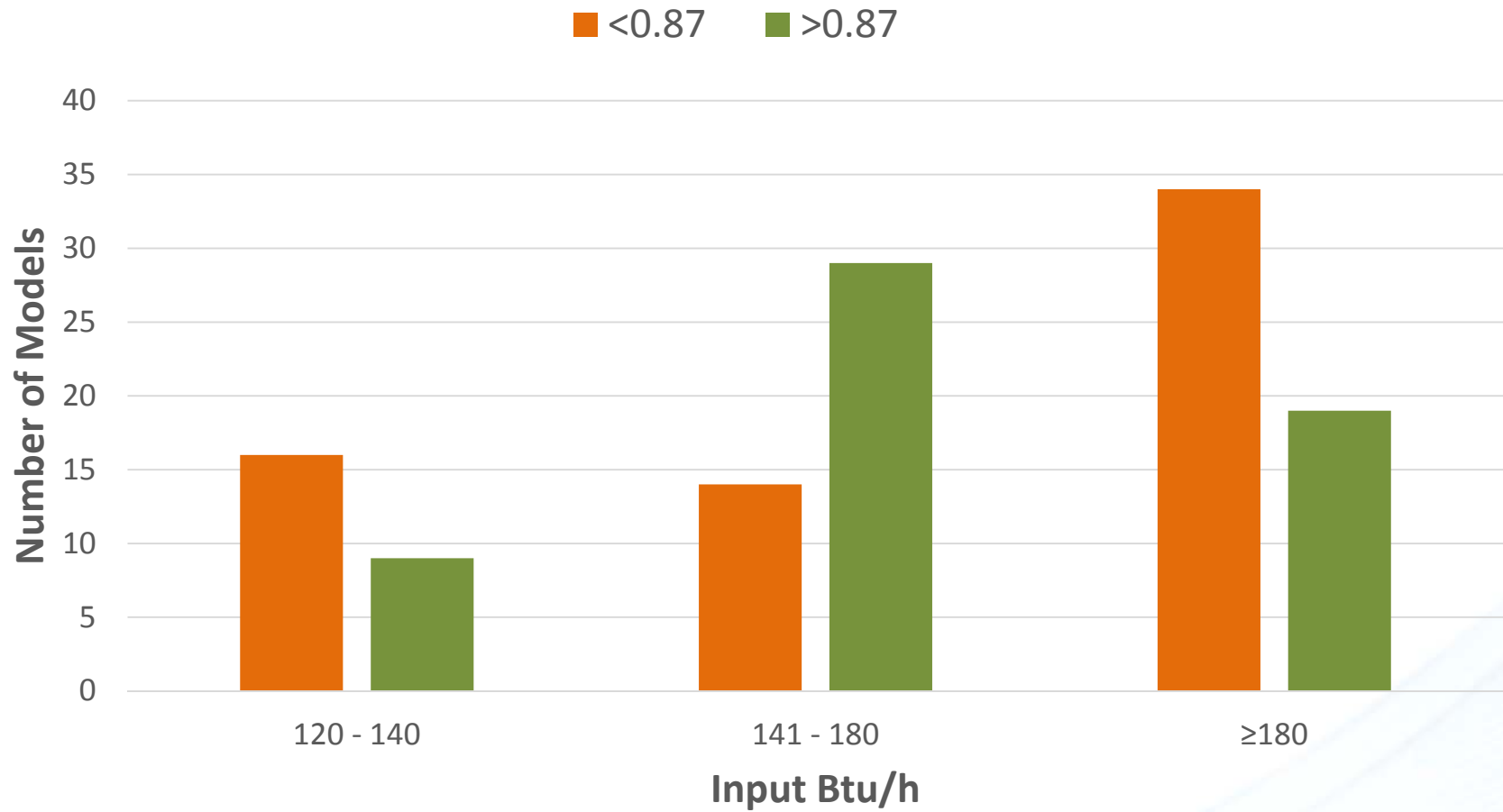


Model Availability by EF

Feb. 2015 vs. Feb. 2016

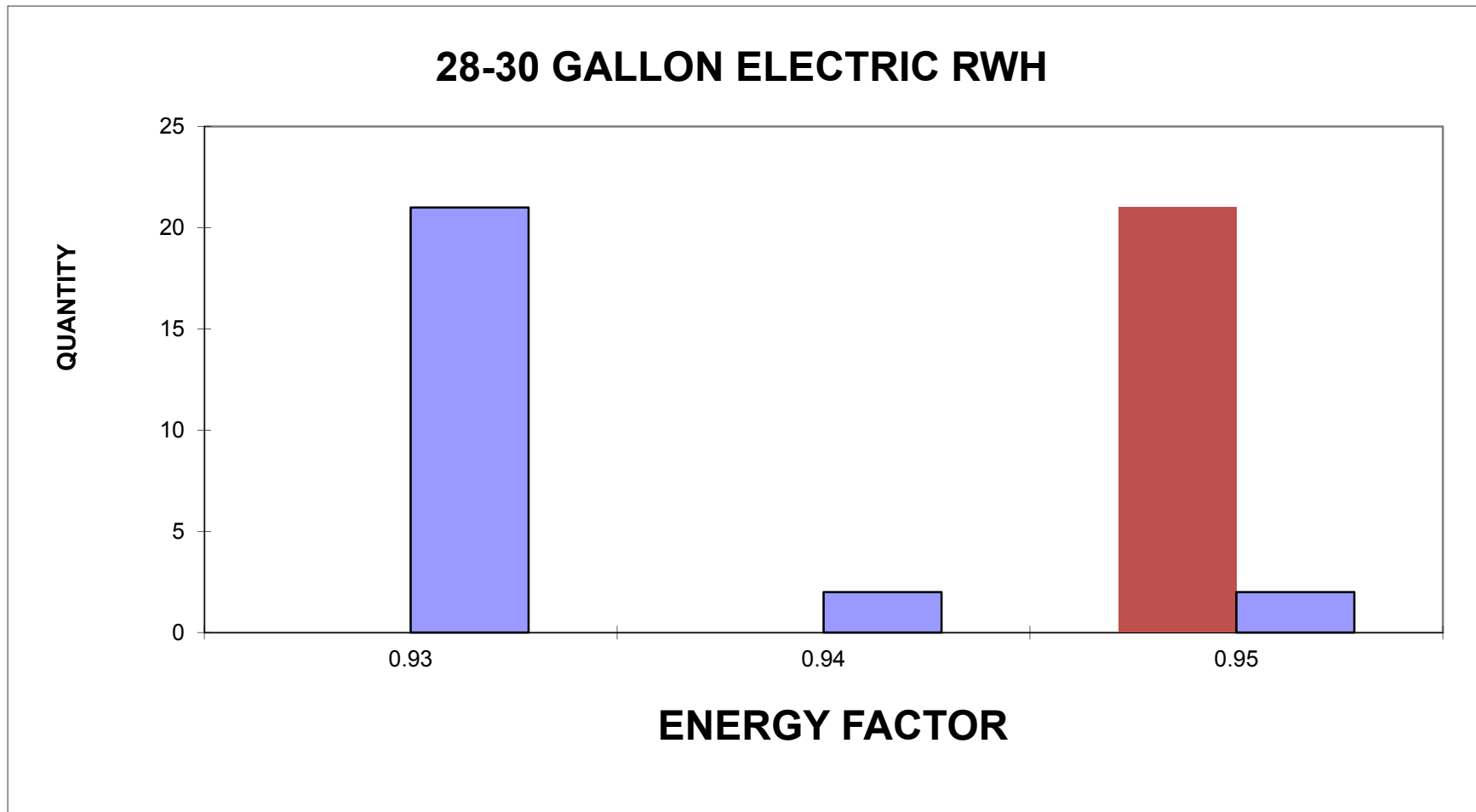


Basic Models Gas Instantaneous RWH Feb. 2016



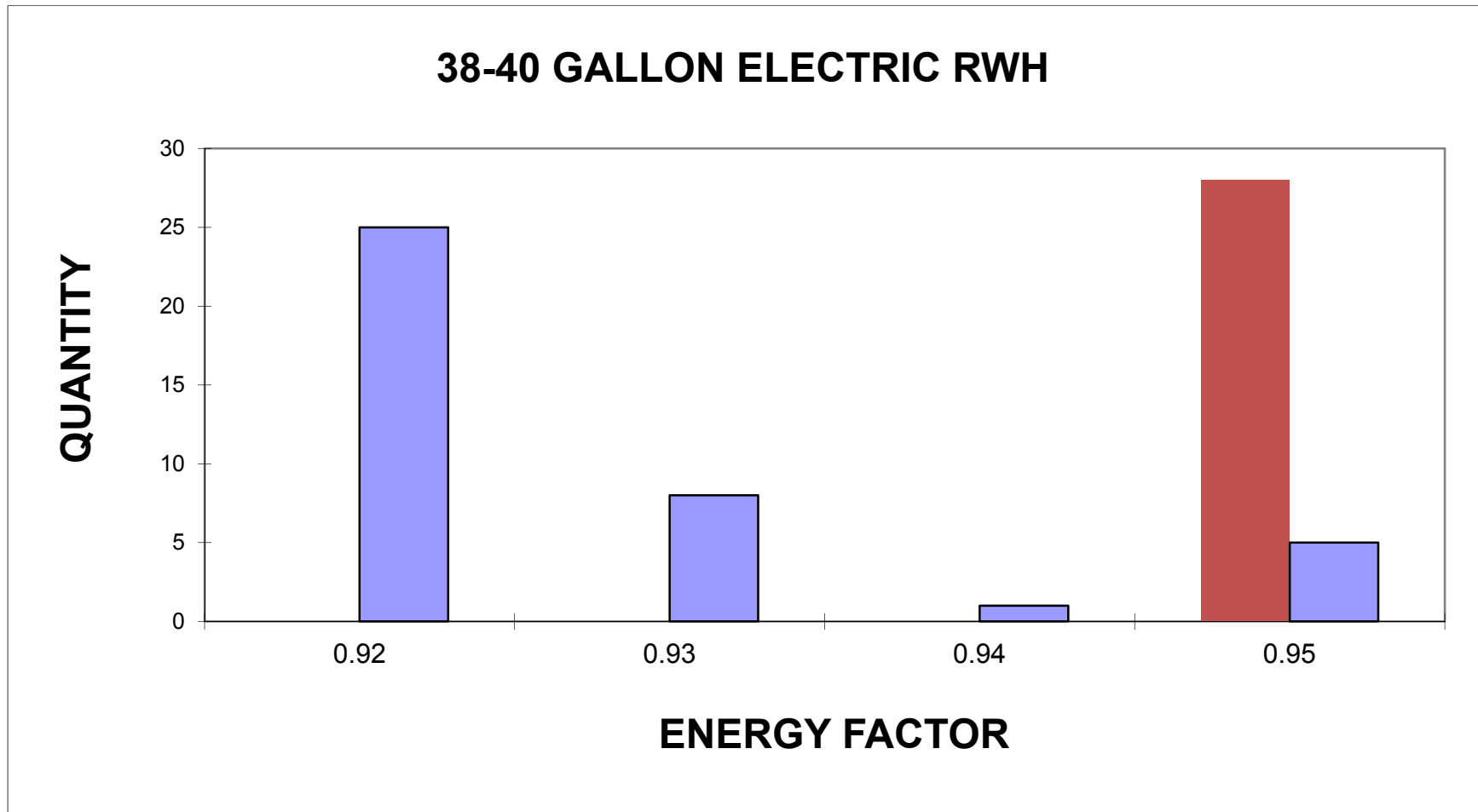
Model Availability by EF

Feb. 2015 vs. Feb. 2016



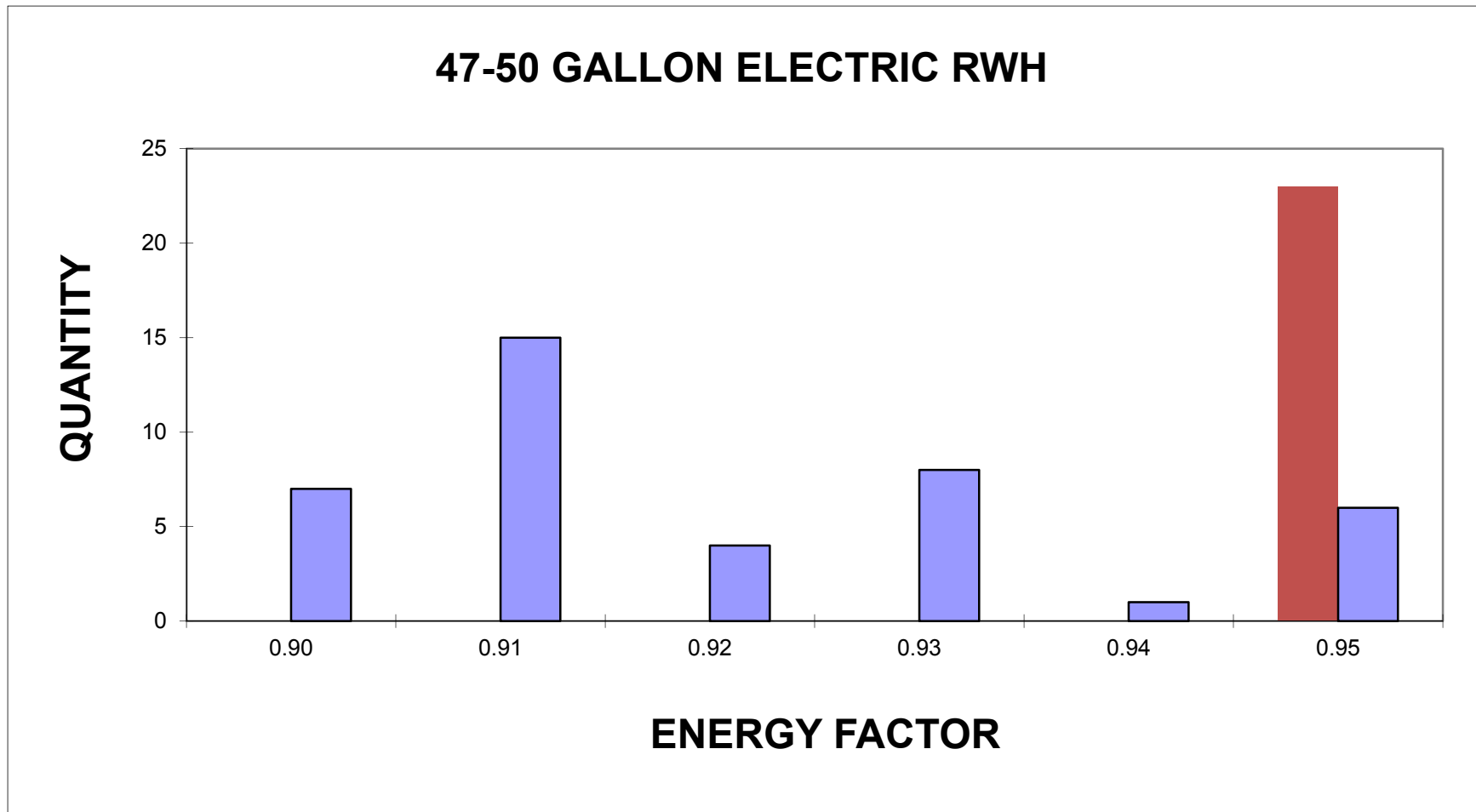
Model Availability by EF

Feb. 2015 vs. Feb. 2016



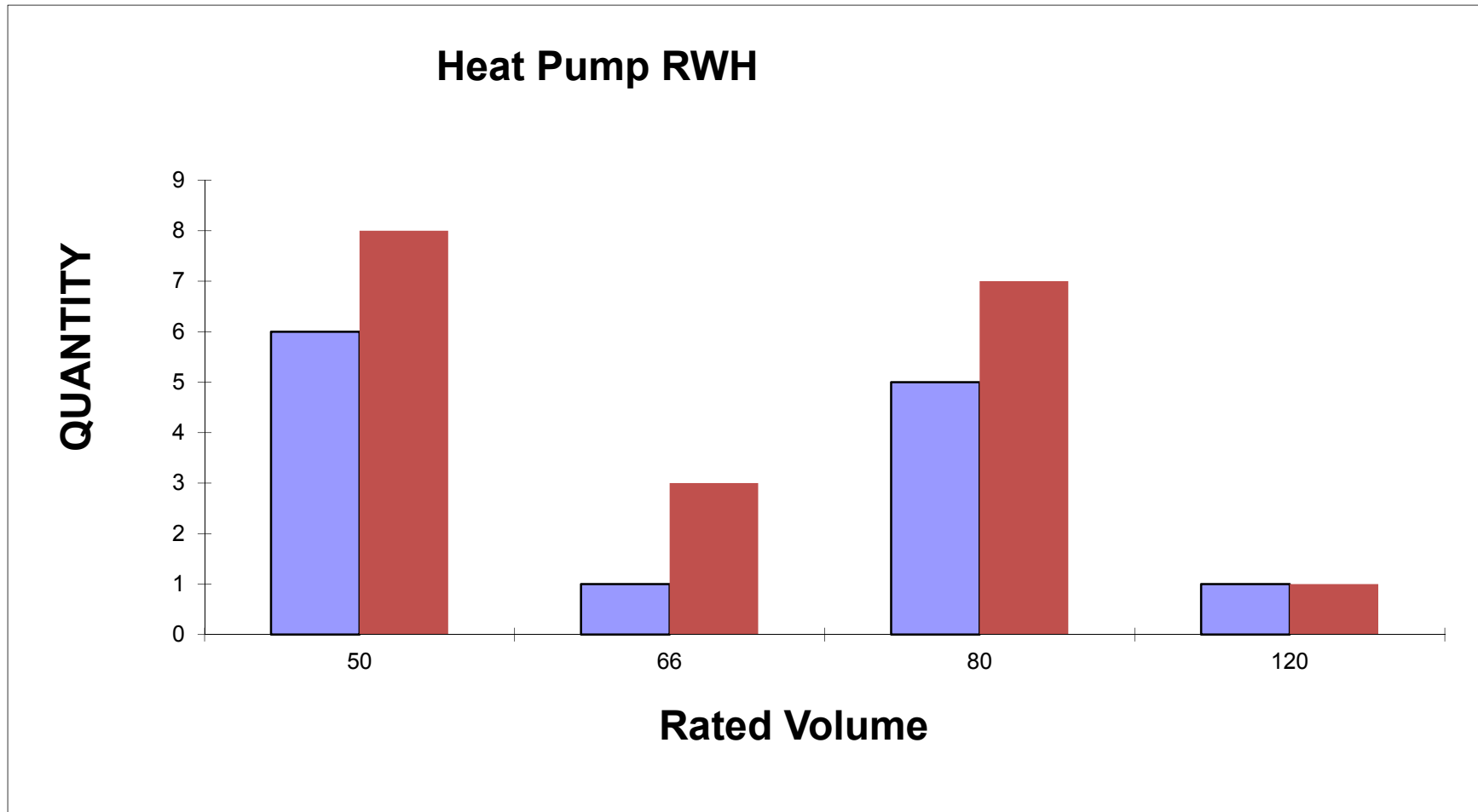
Model Availability by EF

Feb. 2015 vs. Feb. 2016



Heat Pump Model Availability

Feb. 2015 vs. Feb. 2016



Effect of Water Heater Standards

Typical product lines February 2016

**Gas Storage – 30 G; 40 G; 50 G;
tall and standard models,**

**Electric Storage – 30 G; 40 G; 50 G;
tall and standard models**

Electric Heat Pump 50 G; 65 G; 80 G;

Oil Storage – 30/32 G; 50 G

**Gas Tankless – 120 kBtu/h; 140 kBtu/h; 160 kBtu/h; 180
kBtu/h; 199 kBtu/h**

Effect of Water Heater Standards

Storage Water Heater Shipments

July through December; 2015 vs 2014

Residential Gas	-12.7%
Residential Electric	-19%
Commercial Gas	+1.4%
Commercial Electric	+27.6%

TEST PROCEDURE COMPLICATION

All models will be retested to new DOE efficiency test procedure to determine UEF

Minimum “EF” standards will be translated to minimum “UEF” standards

Some current models may drop from the market and some new models may be added in “empty” categories

Effect of Water Heater Standards

Thank You

QUESTIONS?



we make life better™