



Health and Energy in Multifamily Buildings

December 4th, 1:30pm

**Presented at the 2018 Conference on Health,
Environment and Energy**

Ariel Drehobl

Session Moderator

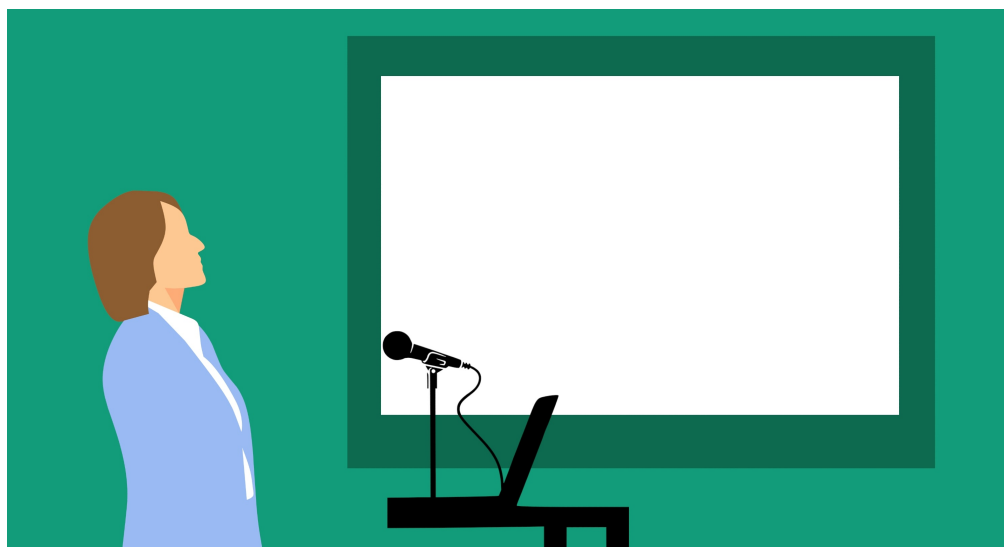
Senior Research Analyst, ACEEE



American Council for an Energy-Efficient Economy

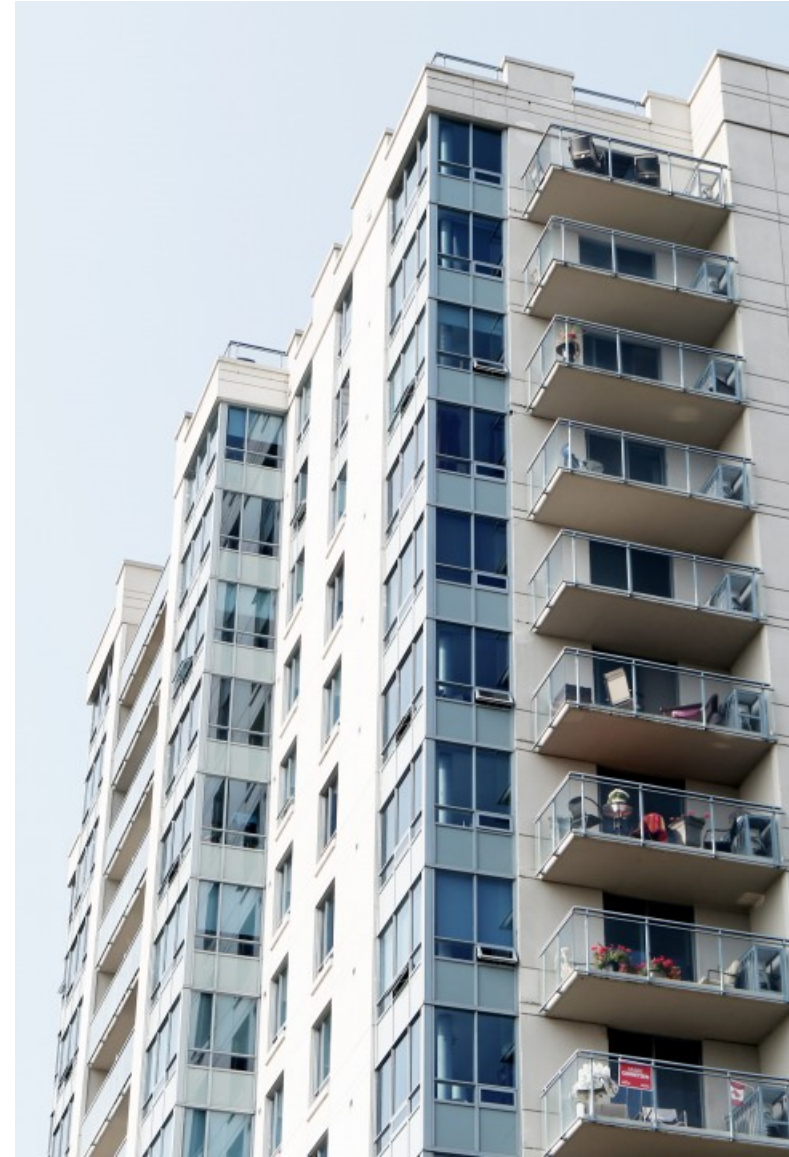
This session will focus on...

- Emerging practices and programs to enhance health in multifamily housing through weatherization, improved ventilation and other “green approaches”
- Focus on studies, benefits, and best practices

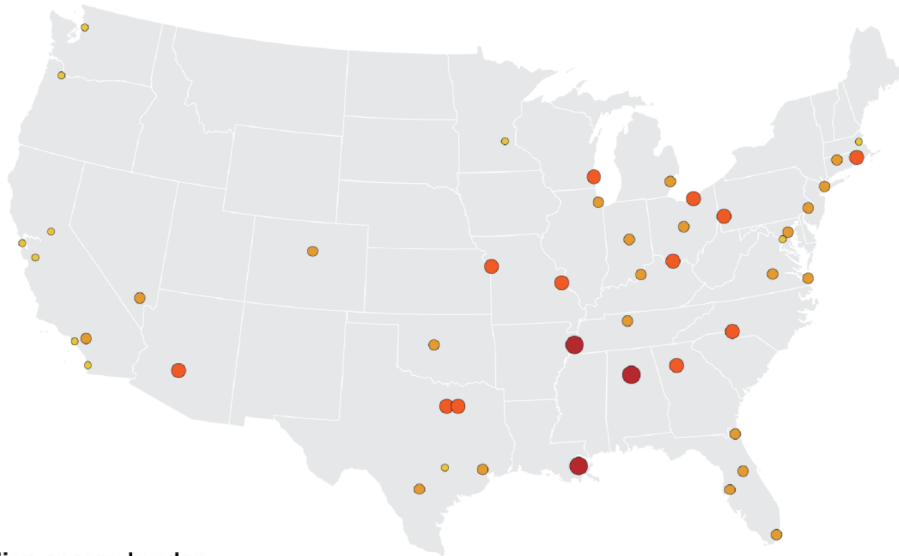


Why focus on multifamily housing?

- Huge potential for savings
- Unique barriers for efficiency and health
- Low-income and renters
- Need for healthy and efficient affordable housing



Energy burden in largest metro areas

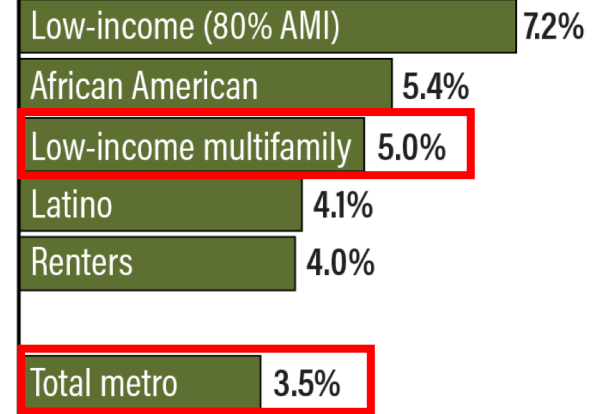


Median energy burden

● 5+% ● 4-5% ● 3-4% ● 1-3%

Energy burden: percent of income spent on energy bills

Metro energy burden by demographic*

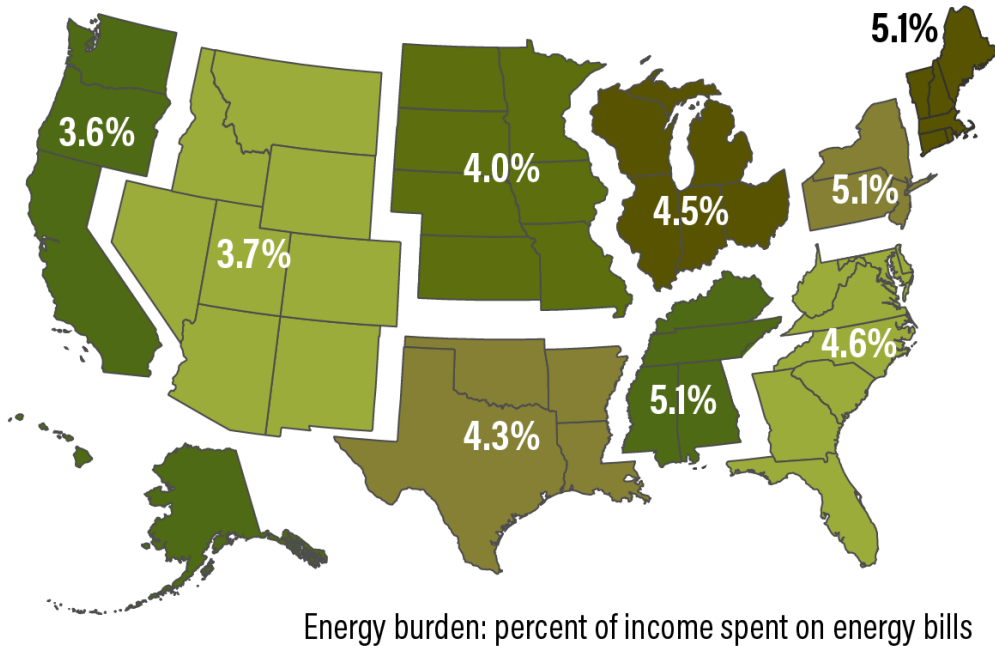


*Based on median across selected cities.

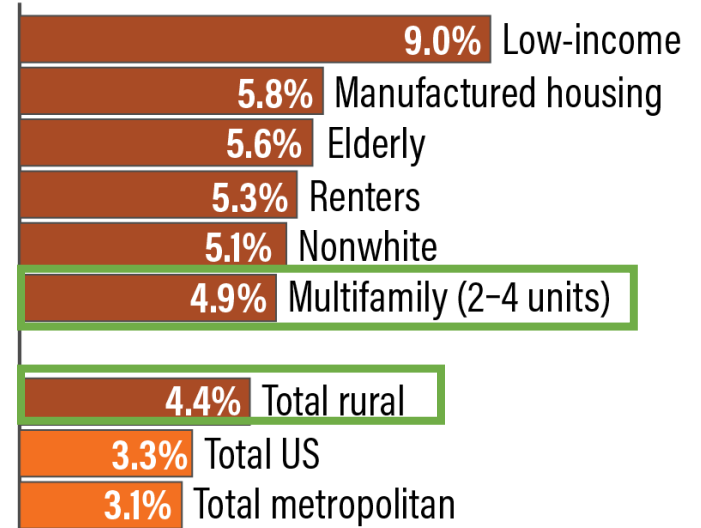
Urban energy burdens

Rural energy burden

By region



By demographic*



*Based on national figures.

Rural energy burdens

Session Reminders

- Continuing education credits
- Download the app
- Q&A at the end
- Ask questions throughout!

