

**THE STARS ARE ALIGNED:
QUANTIFYING NON-ENERGY
IMPACTS IN COMED'S
INCOME ELIGIBLE
PROGRAMS**

**PATRICIA PLYMPTON
JESSICA MINOR-BAETENS**

DECEMBER 4, 2018

PRESENTATION OVERVIEW

- **BACKGROUND QUANTIFYING NON-ENERGY IMPACTS (NEIs) IN ILLINOIS**
- **FUTURE ENERGY JOBS ACT**
- **RESEARCH PLAN TO QUANTIFY NEIs**
- **PARTICIPANT AND SOCIETAL NEIs**
- **QUANTIFYING PARTICIPANT AND SOCIETAL NEIs**
- **LINKING ENERGY EFFICIENCY MEASURES TO NEIs**
- **NEI EXPECTED OUTCOMES**
- **LESSONS LEARNED**
- **PARTNERS & COLLABORATORS**

ILLINOIS STAKEHOLDER ADVISORY GROUP ATTEMPT TO QUANTIFY NEIS



2015 - 2016

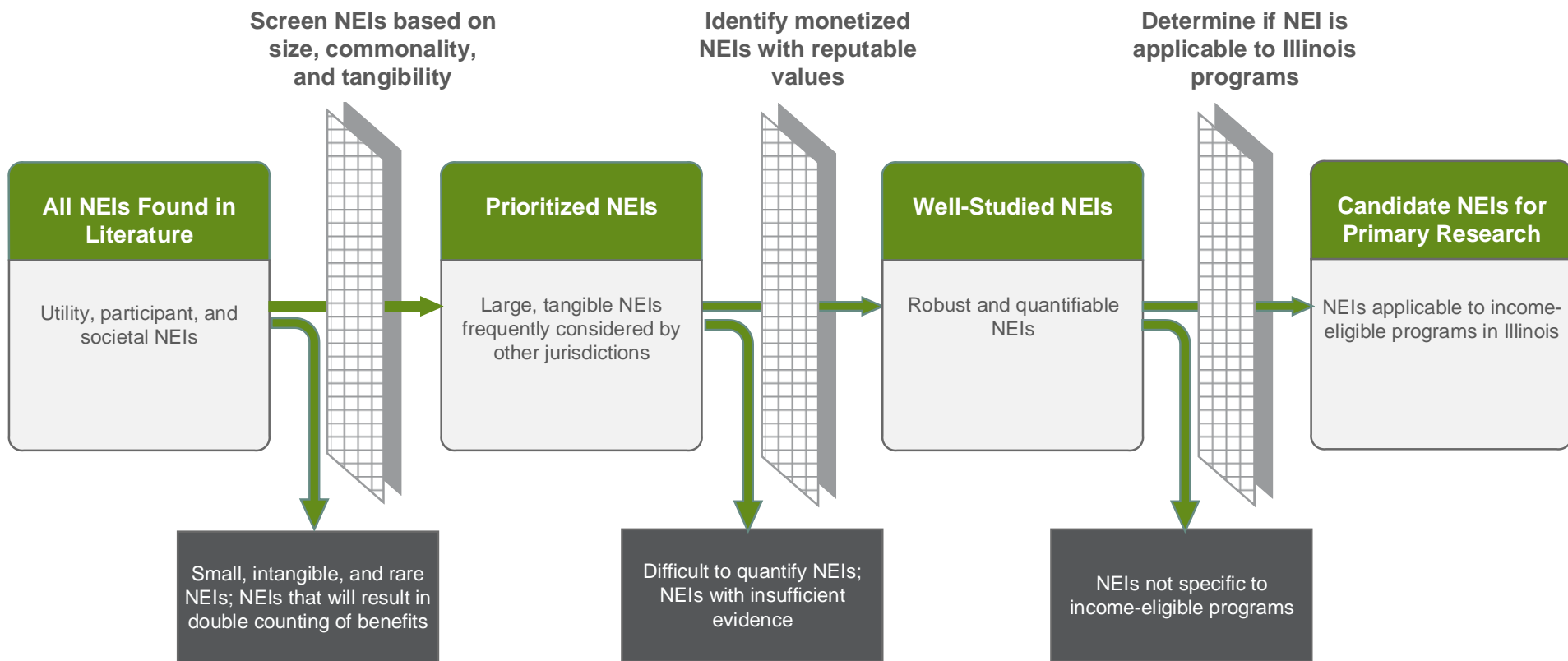
- **January 2016 Memo**
- **No Consensus on Methods**
- **Identified Barriers:**
 - **Lack of Primary IL-Data**
 - **Lack of transparency**

| MEMORANDUM | |
|--|---|
| TO: | TECHNICAL ADVISORY COMMITTEE |
| FROM: | CHERYL JENKINS, PROJECT MANAGER and SAM DENT, TECHNICAL LEAD - VEIC |
| SUBJECT: | DOCUMENTATION OF TAC REVIEW OF NON ENERGY BENEFITS |
| DATE: | 01/08/2016 |
| Cc: | ANNETTE BEITEL, SAG |
| | |
| Contents | |
| 1. Overview | 2 |
| 2. Attachment B; Illinois Statewide Non Energy Benefits Methodologies, 10/23/2015 Draft | 4 |
| A. Residential Whole House Retrofit Non Energy Benefits | 5 |
| B. Commercial Retrofit Non Energy Benefits | 7 |
| 3. Additional 11/11 deliverable | 9 |
| A. Select tables from "Residential Whole House Retrofit NEB factor calculator_V2.xls"; | 9 |
| B. Select Tables from 'CI NEBs_V2.xls' | 11 |
| 4. Comment Summary | 15 |
| 5. Written Comments Received | 16 |
| A. Ameren comments | 16 |
| B. Future Energy Enterprises comments | 17 |
| C. Nicor Gas comments | 17 |
| D. ComEd comments | 18 |
| E. ICC Staff comments | 19 |
| F. IIEC comments | 22 |
| G. Navigant Transferability Review comments | 23 |
| H. Opinion Dynamics comments | 28 |

DECEMBER 2016: ILLINOIS FUTURE ENERGY JOBS ACT INCLUDED PROVISION TO QUANTIFY NEIS



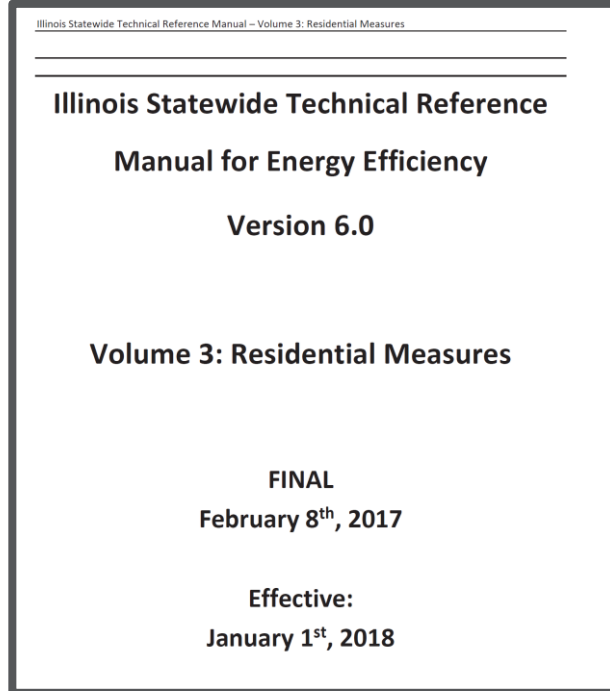
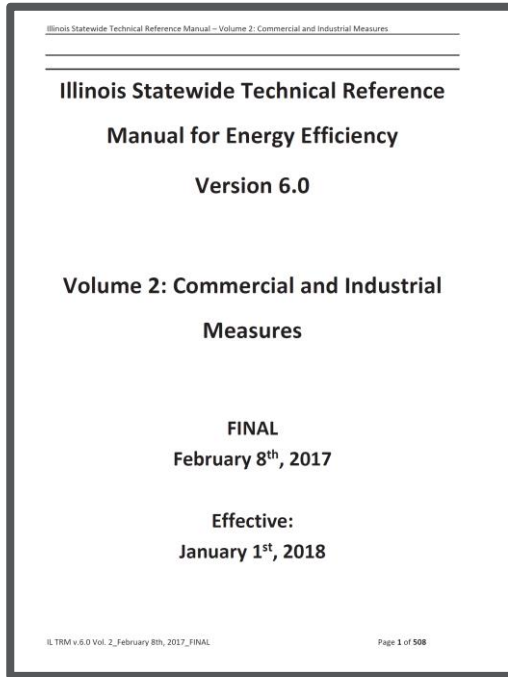
2018: RESEARCH PLAN TO QUANTIFY NEIS ASSOCIATED WITH COMED INCOME ELIGIBLE EE PROGRAMS IN PHASE 1 AND OTHER PORTFOLIO PROGRAMS IN PHASE 2



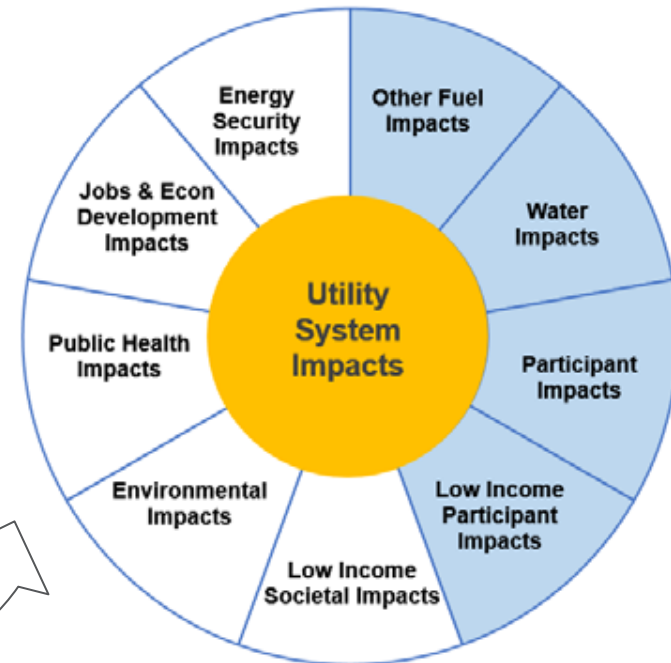
**COLLECT NEI
DATA VIA INCOME
-ELIGIBLE EE
PROGRAM
PARTICIPANT
SURVEYS**



INCLUDE NEIS IN ILLINOIS TECHNICAL REFERENCE MANUAL AND TOTAL RESOURCE COST TEST CALCULATIONS



Total Resource Cost Test



PARTICIPANT AND SOCIETAL NEIs IN INCOME ELIGIBLE PROGRAMS

In addition to utility NEIs, Navigant is quantifying participant and societal NEIs which contain health and environment benefits.

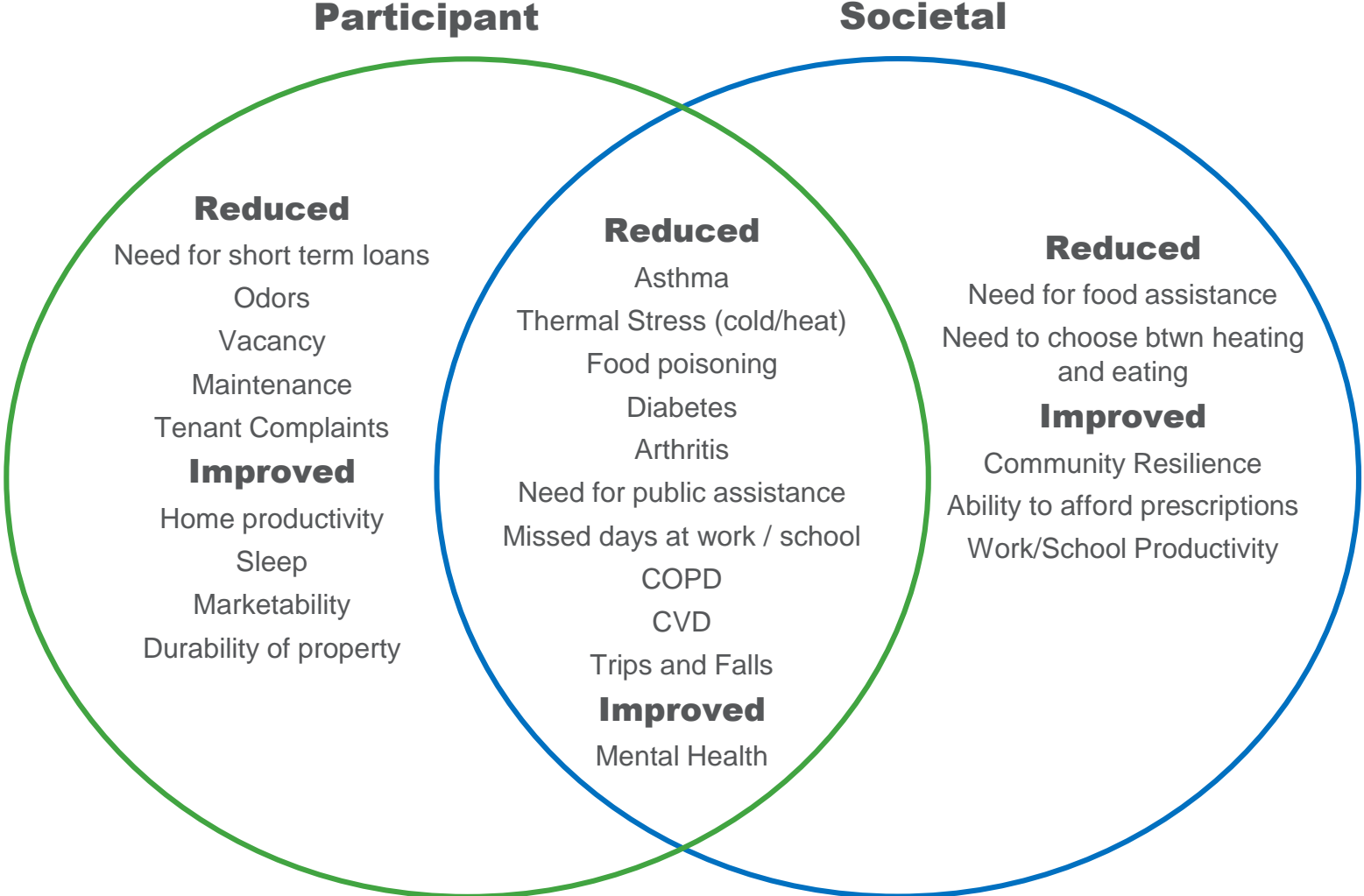
Participant



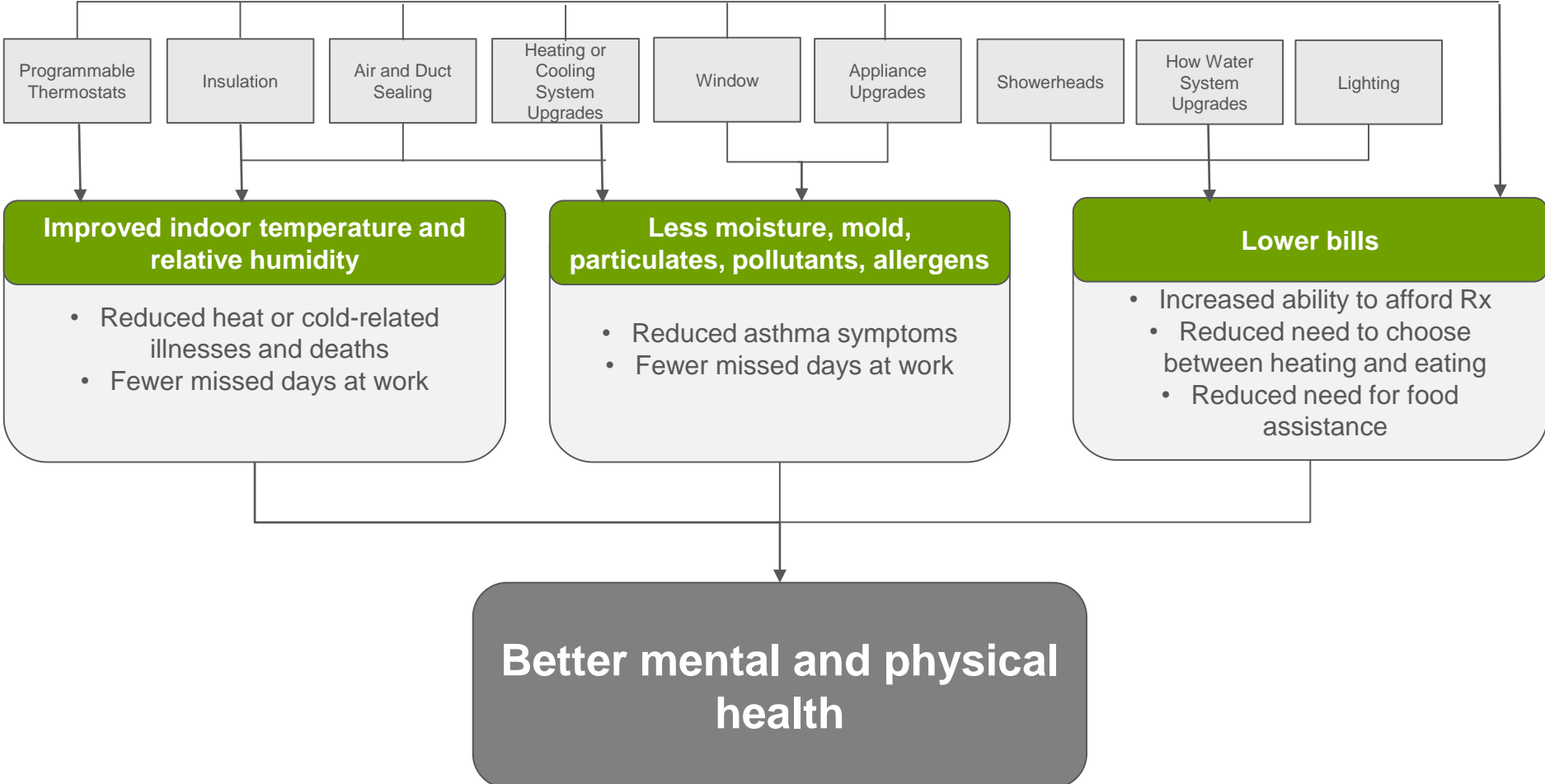
Societal



OVERVIEW OF EXPECTED AND POSSIBLE NEIS ASSOCIATED WITH INCOME ELIGIBLE PROGRAMS



LINKING ENERGY EFFICIENCY MEASURES TO NEIS



QUANTIFYING PARTICIPANT AND SOCIETAL NEIs IN INCOME ELIGIBLE PROGRAMS

Quantification Methodology

- **Online / Telephone Surveys**
 - **SF IE Customers**
 - **MF IE Customers**
 - **MF IE Property Managers**
- **Survey design**
 - **Pre-weatherization survey**
 - **One-year post-weatherization survey**

Outcome: % reduction in health issue

Monetization Methodology

- **Collect Illinois specific cost data**
- **Quantify the reduction in hospitalizations, ED, and physician office visits avoided**
- **Quantify the cost for participants**
- **Quantify the cost for society**

Outcome: \$ value benefit / household weatherized / year

NEI EXPECTED OUTCOMES (PER HOUSEHOLD/YEAR)



LESSONS LEARNED

1

Researching longer term health impacts (e.g., cancer, cardiovascular disease, lead exposure, chronic respiratory illness) is challenging for utilities.

2

Linking utility customer information to hospital information to confirm health incidence is unlikely

3

Accessing health data in state databases is unlikely

4

Acquiring contact information for multifamily tenants where building owner is program participant may not be feasible

5

Lack of consistent methodologies requires significant secondary research

PARTNERS & COLLABORATORS



powering lives



**Illinois Energy Efficiency
Stakeholder Advisory Group**



Green & Healthy Homes Initiative®

Hospital Consortium



Opinion **Dynamics**



ELEVATE ENERGY
Smarter energy use for all

CONTACTS

PATRICIA PLYMPTON

Associate Director

202.253.9356

Patricia.Plympton@Navigant.com

JESSICA MINOR-BAETENS

Managing Consultant

734.794.4865

Jessica.Minor-Baetens@Navigant.com