



ALIGNING ACTION
FOR HEALTHSM

The Big Easy: Policy and Planning to Maximize Health Gains in New Orleans

ACEEE 2018 Conference on
Health, Environment & Energy

December 5th, 2018



In the room...

- ◆ Energy
- ◆ Environment
- ◆ Health and Health care
- ◆ Academia / Research
- ◆ Policy
- ◆ Planning / Architecture
- ◆ Government
- ◆ Private Sector
- ◆ Other?

Opportunities for Health and Wellness in New Orleans

Energy

Climate
Action
Strategy

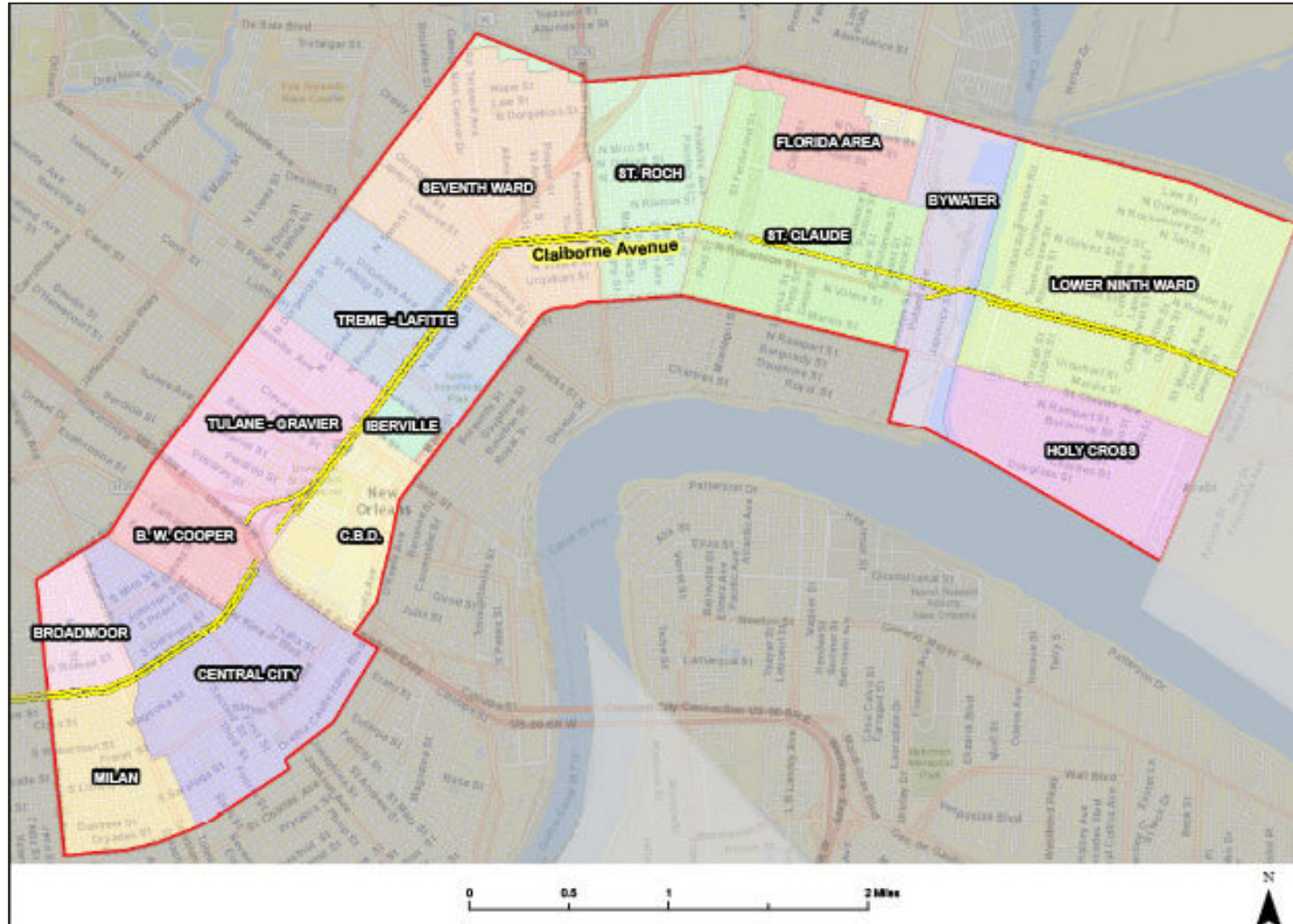
Environment

Built and
Natural
Environment
Strategies

Health

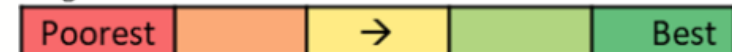
Community
Health
Assessments
&
Strategic
Mobility Plan

Claiborne Corridor



Claiborne Neighborhoods	Diabetes	High BP	No Vehicle
B.W. Cooper	20.7%	6.2%	34%
Broadmoor	13.0%	2.1%	18%
Bywater	9.3%	2.1%	18%
CBD	8.6%	1.5%	31%
Central City	18.6%	3.9%	45%
Florida Area	21.6%	4.1%	22%
Holy Cross	16.5%	3.4%	16%
Iberville Dev.	22.4%	4.3%	90%
Lower 9th Ward	21.0%	9.1%	28%
Milan	12.7%	2.3%	24%
7th Ward	17.7%	3.8%	37%
St. Claude	17.8%	3.5%	30%
St. Roch	17.9%	3.7%	37%
Treme'/Lafitte	17.7%	3.5%	39%
Tulane/Gravier	12.9%	2.1%	34%

Legend:





Panelists

- ◆ **Laura Bryan**, Director, Mayor's Office of Transportation
- ◆ **Camille Pollan**, Energy Efficiency Program Manager, Office of Resiliency and Sustainability
- ◆ **Candice Marti**, Director of Marketing and Customer Experience, Transdev
- ◆ **Dan Favre**, Executive Director, Bike Easy



MAYOR LATOYA CANTRELL

**Office of
Transportation**

CITY OF NEW ORLEANS



Partners

Regional Transit Authority, Regional Planning Commission, Jefferson Transit, New Orleans Department of Public Works, Department of Health, City Planning Commission, Office of Resilience & Sustainability, Office of Economic Development, Bike Easy, etc.

- To create **safer street infrastructure** for cars, bicyclists, and pedestrians.
- To better **connect people locally and regionally** through innovative transit and roadway initiatives.
- To provide **equitable mobility access** to the roadway for all users and modes.
- To **initiate traffic improvement projects** that make traveling through the City more efficient.
- To **coordinate transportation projects** and initiatives among internal and external partners.

SAFETY • CONNECTIVITY • EQUITY • EFFICIENCY



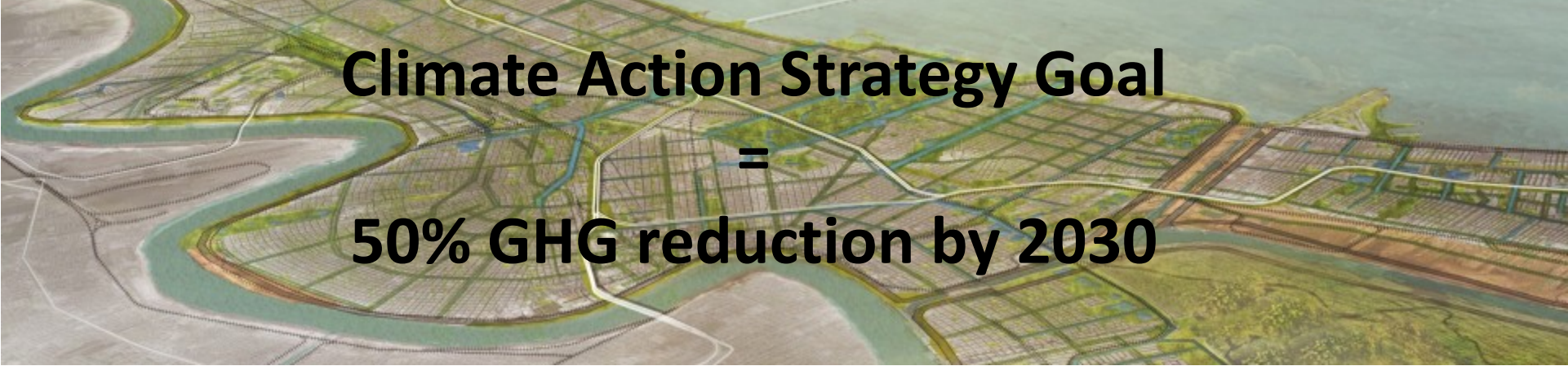
City of New Orleans

Laura Bryan, Director

Policy and Planning to Maximize Health Gains in New Orleans

Camille Pollan (cpollan@nola.gov)
Energy Efficiency Program Manager
Office of Resilience and Sustainability
City of New Orleans
December 5, 2018



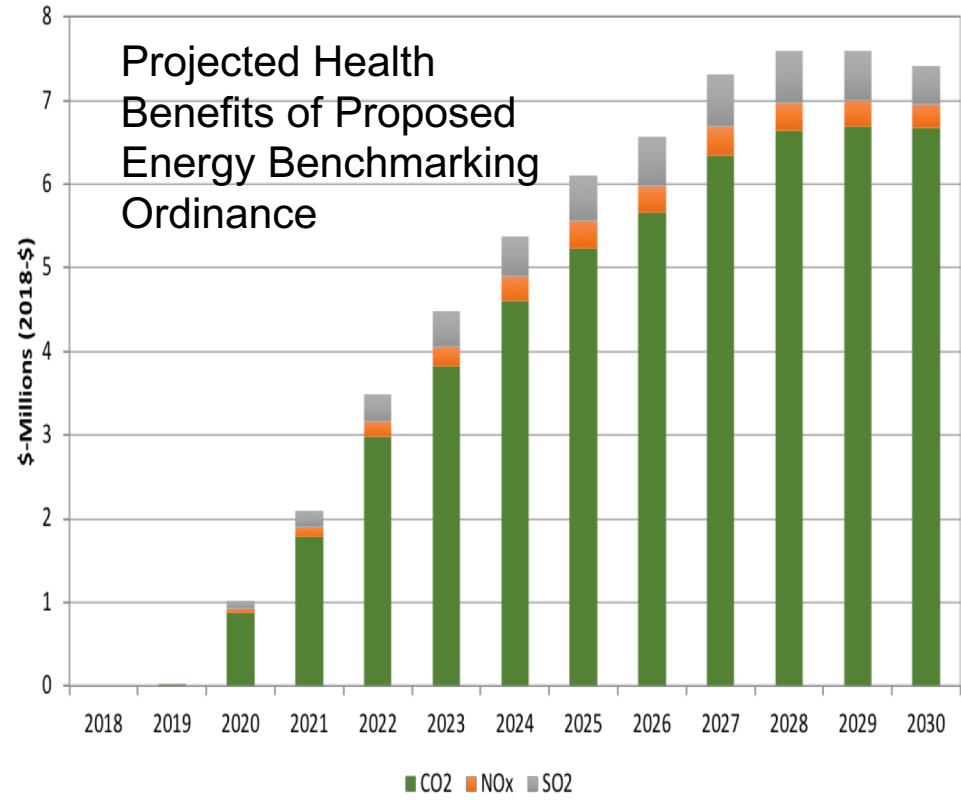


Climate Action Strategy Goal

=

50% GHG reduction by 2030

	Energy	Transportation
2017 ACEEE score	<ul style="list-style-type: none"> Ranked 40th overall out of 51 cities evaluate 	<ul style="list-style-type: none"> 9 points out of 30 available
2030 goals	<ul style="list-style-type: none"> 100% low carbon power 255 MW solar 3.3% annual energy savings 	<ul style="list-style-type: none"> 50% non automobile trips
Strategies	<ul style="list-style-type: none"> Reduce reliance on carbon-intensive fuels Save energy and make our savings a sustainable resource Increase resilience of water, energy and sewage infrastructure 	<ul style="list-style-type: none"> Transform infrastructure to reduce car dependence Encourage active transportation Increase fuel efficiency, clean fuel use, and shared-use mobility services



\$59 million in emissions related benefits

Transdev in North America

- Largest private sector provider of multiple modes of transportation
- **200 cities & communities in U.S.**
- In **20 countries on six continents**
- **10 million passenger trips every day globally**
- **Local management supported by expertise** in every aspect of transit from corporate and regional teams
- In New Orleans metro, operate for both Orleans and Jefferson Parishes



Health and Transportation

- Transportation is a social determinant of health
- Public/Private Transit Partnerships
 - Both partners have incentives to deliver efficient service and provide the best value - competition keeps costs down and motivates innovation
- The environment: zero emission vehicles are better for the environment and offer cost savings after 6 years
- Everyone benefits: integrating equity into how we approach mobility
- The future: Mobility as a Service (MaaS)



COMPLETE STREETS FOR HEALTH EQUITY



- Complete
- Streets for
- Health
- Equity

An Evaluation of
New Orleans and Jefferson Parish

bikeeasy



bikeeasy
Dan Favre, Executive Director



Discussion

Research &
Evidence

Policy Levers

Community
Engagement

Outcomes

Successes



Audience Q & A



Thank you!