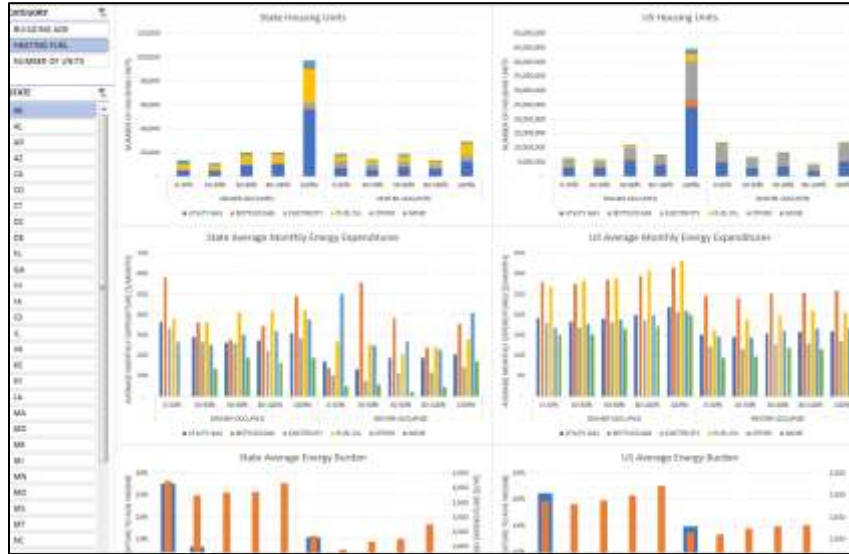




## CLEAN ENERGY FOR LOW INCOME COMMUNITIES ACCELERATOR (CELICA)

### Low-Income Energy Affordability Data (LEAD) Tool



#### What is the LEAD Tool?

The LEAD Tool provides interactive state, county and city level worksheets, graphs, and data, including:

- Households at different income levels
- Homeowners versus renter
- Fuel type, building type, and construction year
- Average monthly energy expenditures
- Energy burden as percentage of income spent on energy

#### What does the LEAD Tool include?

- All 50 states
- 9 Census Divisions by County
- Census tract level files for all 50 states
- City template to customize data
- Based on average of 2011-2015 Census

To download datasets, visit:

<https://openei.org/doe-opendata/dataset/celica-data>

For inquiries, please reach out to:

[stateandlocal@ee.doe.gov](mailto:stateandlocal@ee.doe.gov)

**Clean Energy for Low Income Communities Accelerator Energy Data Profiles**

**ABOUT THIS TOOL:**  
The Better Buildings Clean Energy for Low Income Communities Accelerator (CELICA) was launched in 2016 to help state and local partners across the nation meet their goals for increasing uptake of energy efficiency and renewable energy technologies in low and moderate income communities. As a part of the Accelerator, CEGE created a set of low and moderate income (LMI) energy data profiles to assist partners with understanding their LMI community characteristics. This LMI energy policy and program planning tool provides interactive state, county and city level worksheets with graphs and data including number of households at different income levels and numbers of homeowners versus renters. It provides a breakdown based on fuel type, building type, and construction year. It also provides average monthly energy expenditures and energy burden (percentage of income spent on energy).

**HOW TO USE:**  
The data profiles can be used to support program design and targeting, and they can be paired with other data to improve LMI community energy benchmarking and program evaluation. Datasets are available for all 50 states, 9 census divisions, and tract levels. You will have to create a filter in the search to interact with the data. A description of each of the files and what states are included in each U.S. Census Division can be found in the file "DESCRIPTION OF FILES".

**Data and Resources**

DESCRIPTION OF FILES	Preview
DESCRIPTION OF FILES	Download
METHODOLOGY	Download
DATA DICTIONARY	Download
STATE_ALL_2015	View PDF
COUNTY_WESTNORTHCENTRAL_2015	View PDF
COUNTY_WESTSOUTHCENTRAL_2015	View PDF
COUNTY_PACIFIC_2015	View PDF

## **Additional Low Income Program Planning Resources**

For more information about the Clean Energy for Low Income Communities Accelerator (CELICA) and other related US Department of Energy low income program resources, visit:

1. Better Buildings: Clean Energy for Low Income Communities Accelerator (List of Partners, Fact Sheet, and National Partner Agreement):  
<https://betterbuildingsinitiative.energy.gov/accelerators/clean-energy-low-income-communities>
2. State & Local Solution Center: Low and Moderate Income Communities (Program Planning Tools and More Information):  
<https://energy.gov/eere/slsc/low-moderate-income-communities>
3. SEE Action Report on Energy Efficiency Financing for Low and Moderate Income Households: Current State of the Market, Issues, and Opportunities:  
<https://www4.eere.energy.gov/seeaction/publication/energy-efficiency-financing-low-and-moderate-income-households-current-state-market>
4. WAP Memorandum 024: The Use of Solar PV in the WAP:  
<https://energy.gov/eere/wipo/downloads/wap-memorandum-024-use-solar-pv-wap>