

# Heat Pump Water Heater Demonstration

*Delaware County Electric  
Cooperative  
Delhi, NY*

February 23<sup>rd</sup>, 2015

Ben Ealey

*Project Engineer*

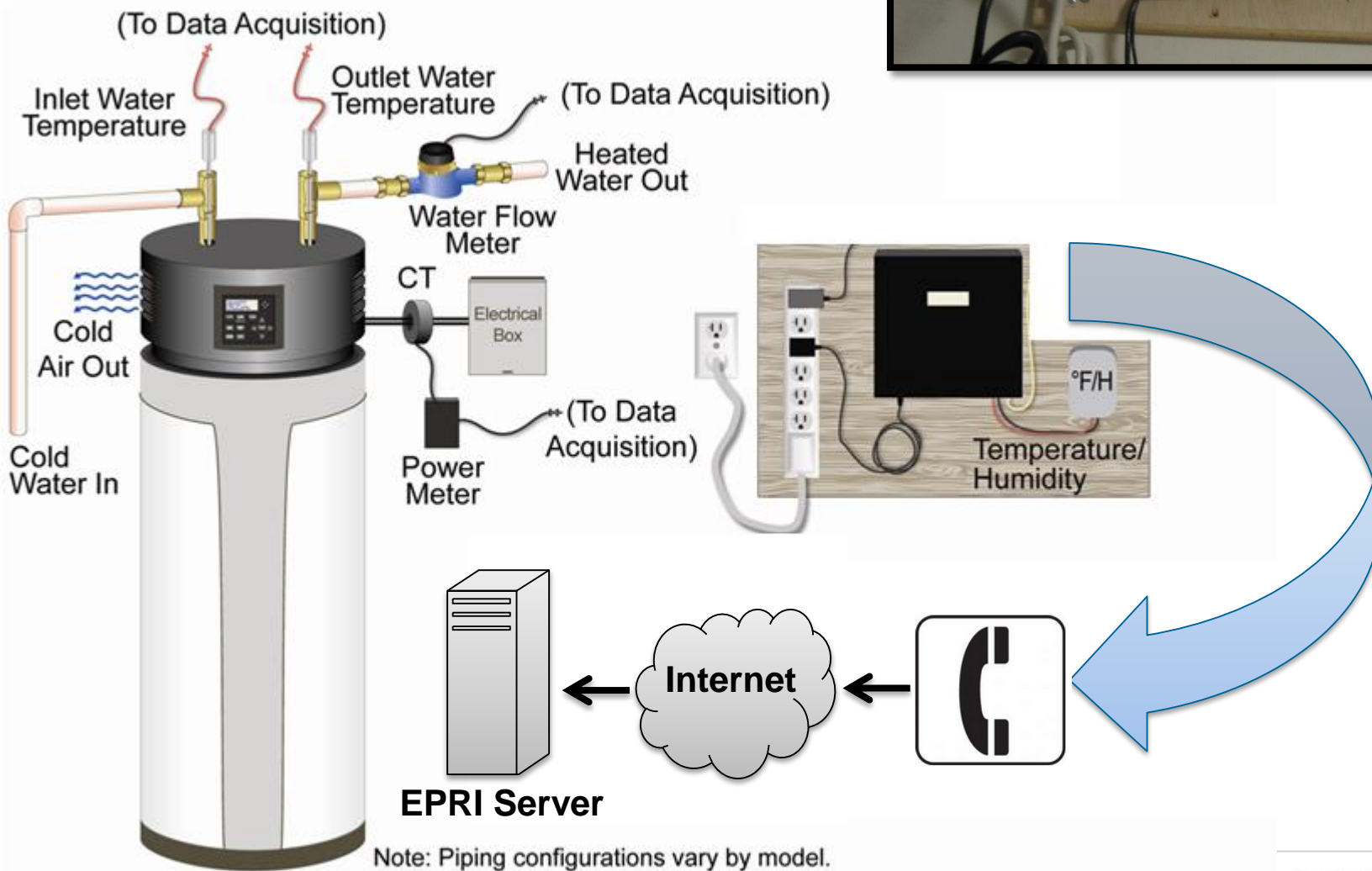
*Electric Power Research Institute*



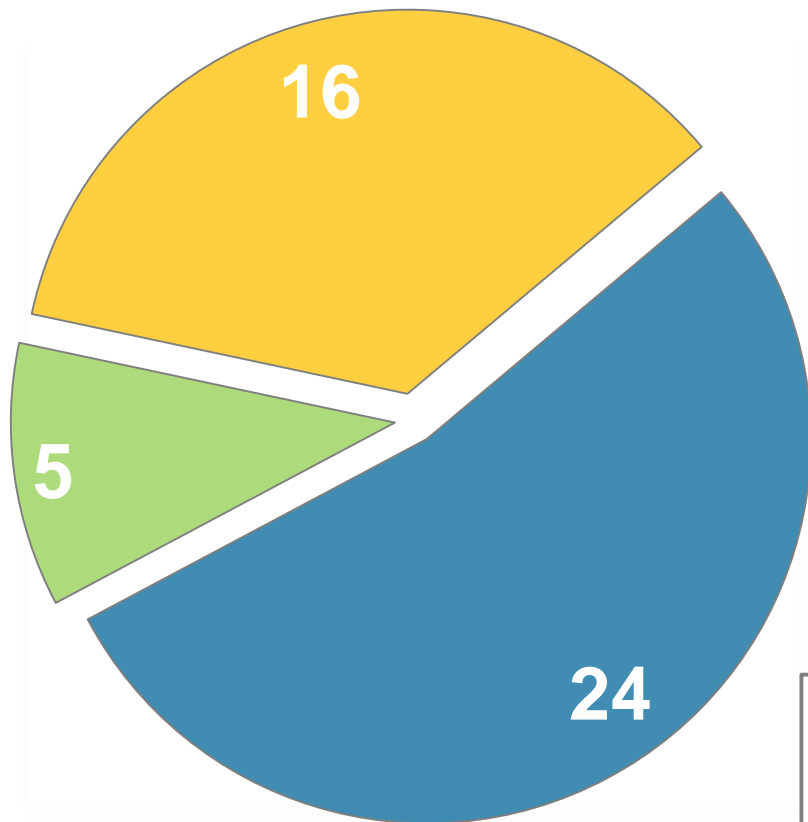
# Outline

1. Instrumentation Design
2. Selection of Sites
3. Preliminary Results

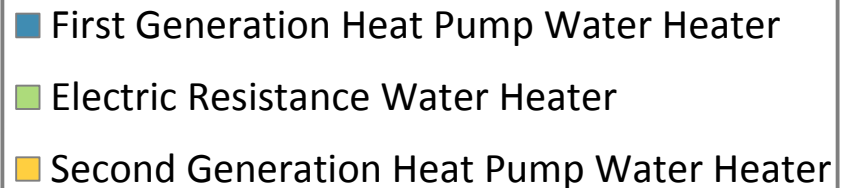
# Instrumentation Design Equipment



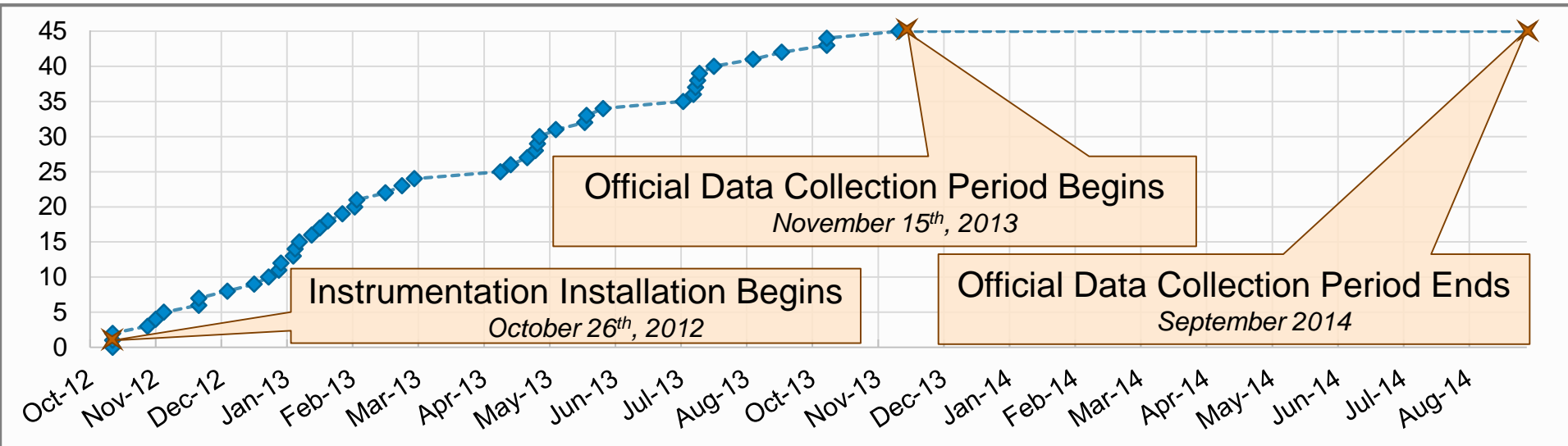
# Installation and Site Selection



- Demonstration sites are located around the town of Delhi, New York.
- Almost all of the water heaters are installed in the basements of area homes. One water heater is installed in a garage.
- Instrumentation install was completed prior to the 2013-2014 Winter (December 2013 through March 2014).



# A look back...

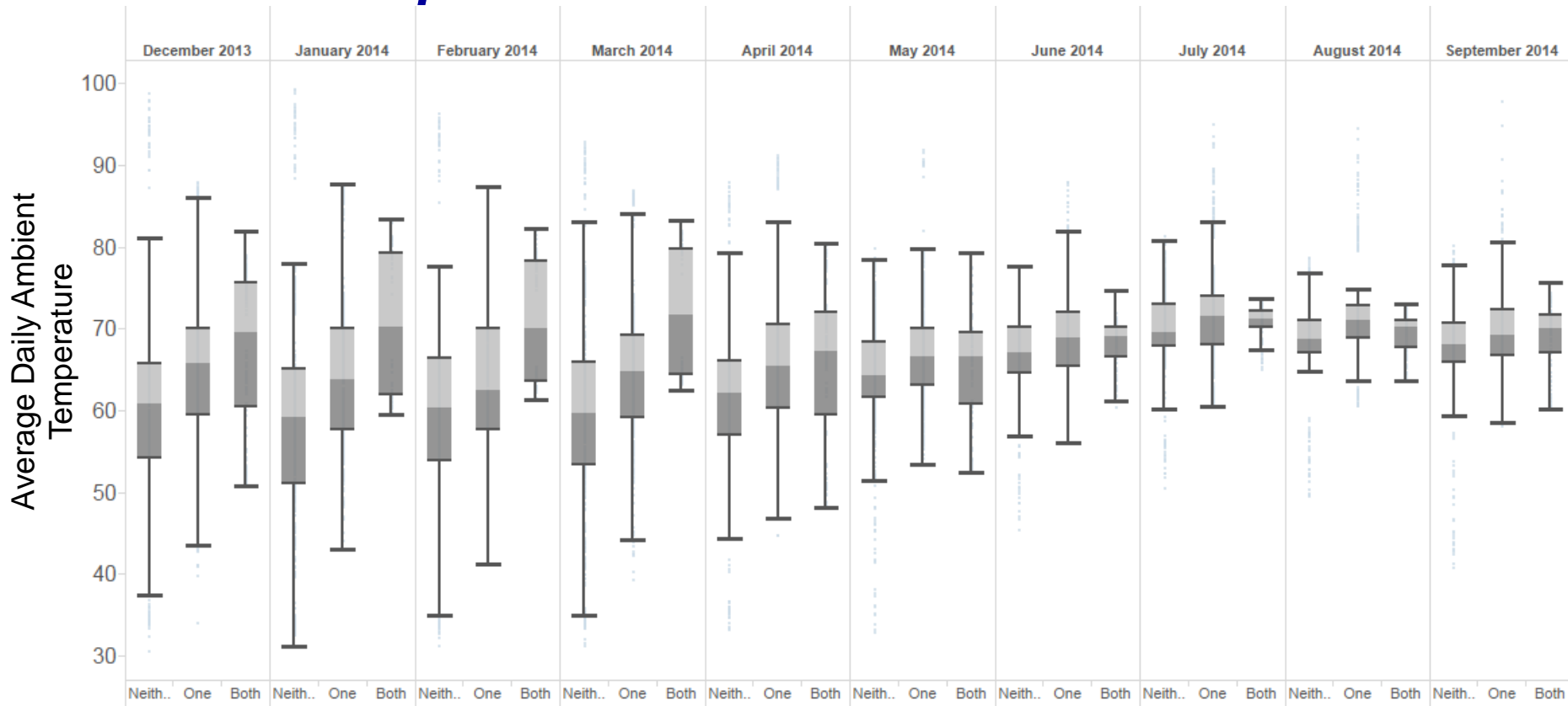


- The official data collection period spanned from November 2013 through September 2014.
- Instrumentation was removed in October / November.



# Analysis

## Indoor Air Temperature



**Neither:** No space conditioning nor nearby heat source

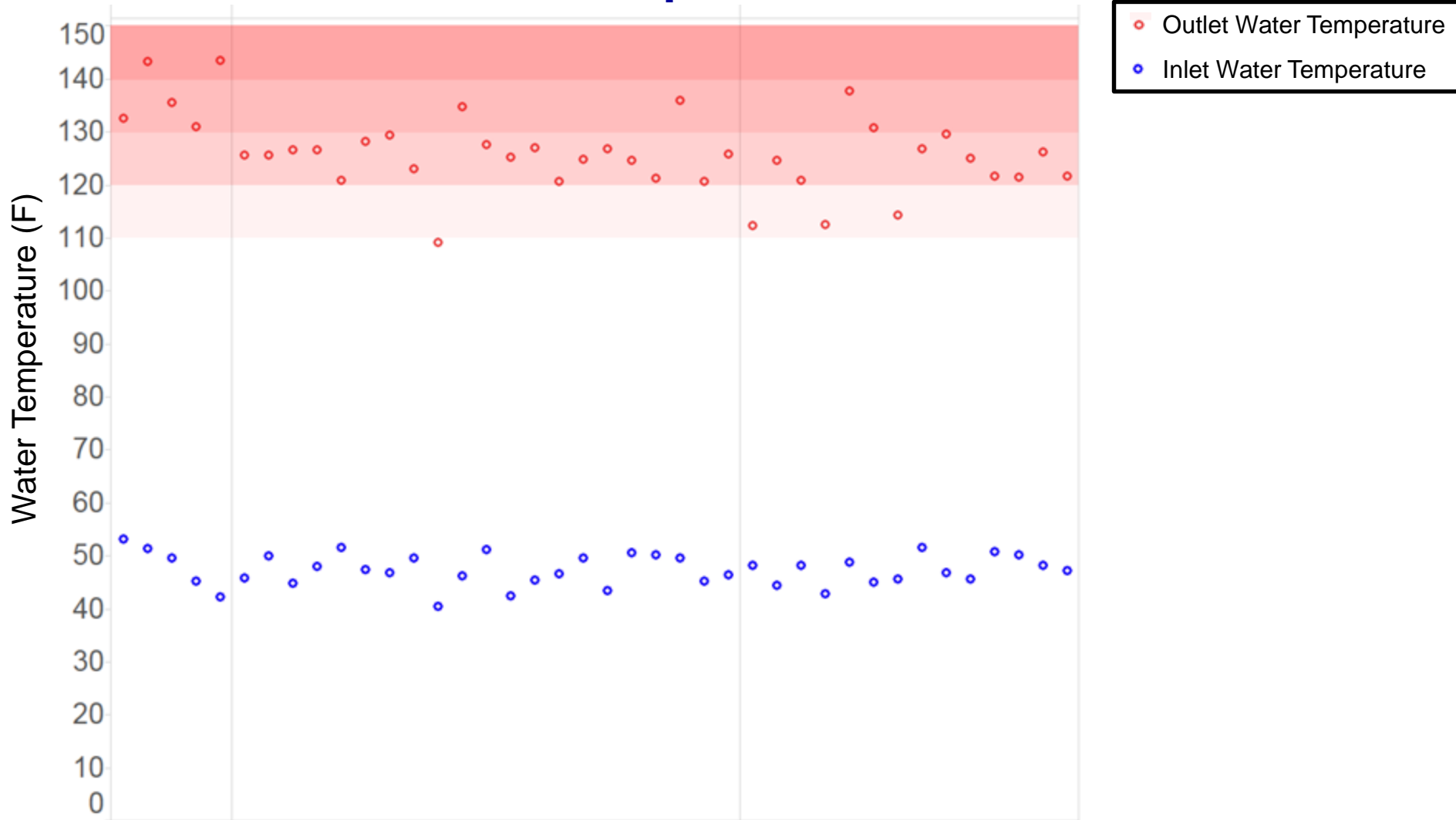
**One:** Either space conditioning or a nearby heat source.

**Both:** Both space conditioning and a nearby heat source.

*Results may vary in the final report due to variations in filtering and analysis methods.*

# Analysis

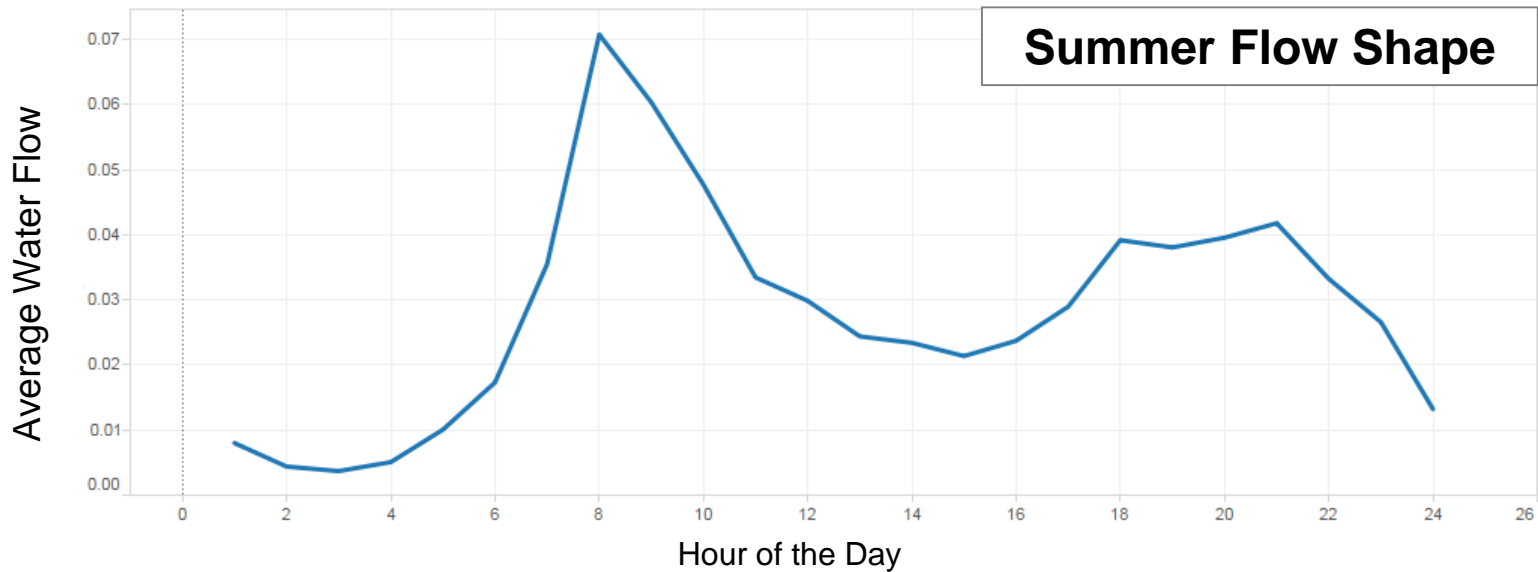
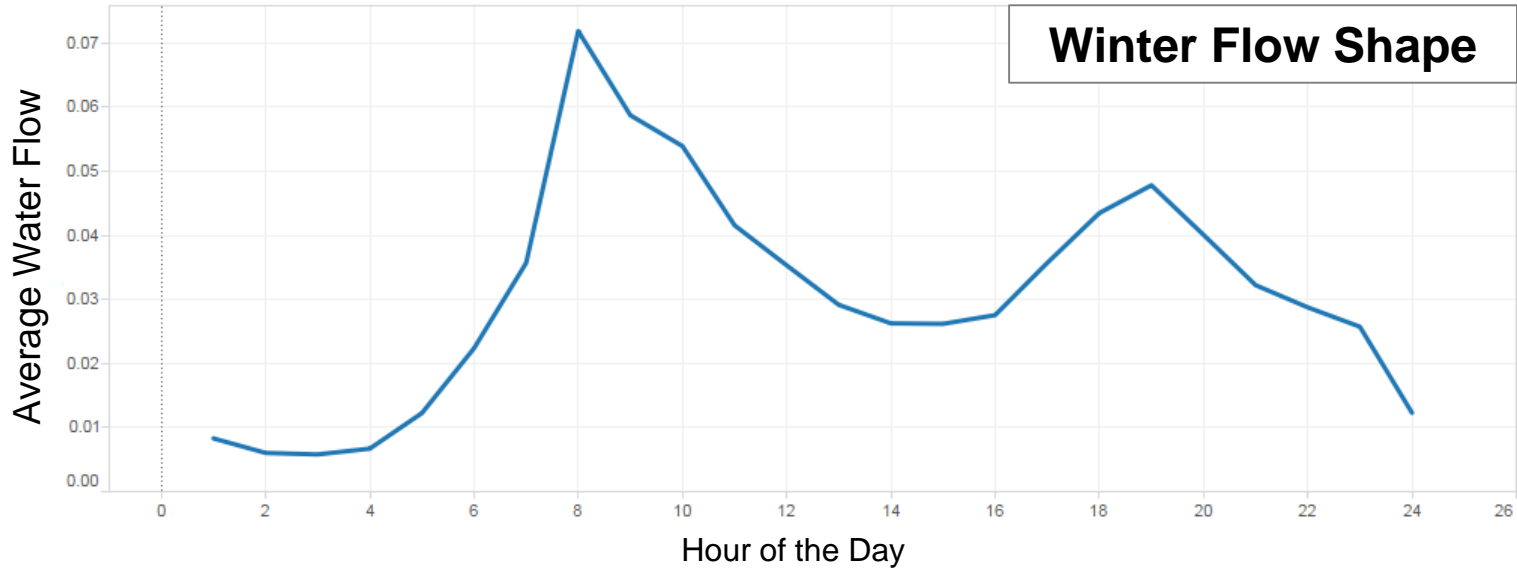
## Inlet and Outlet Water Temperatures



Results may vary in the final report due to variations in filtering and analysis methods.



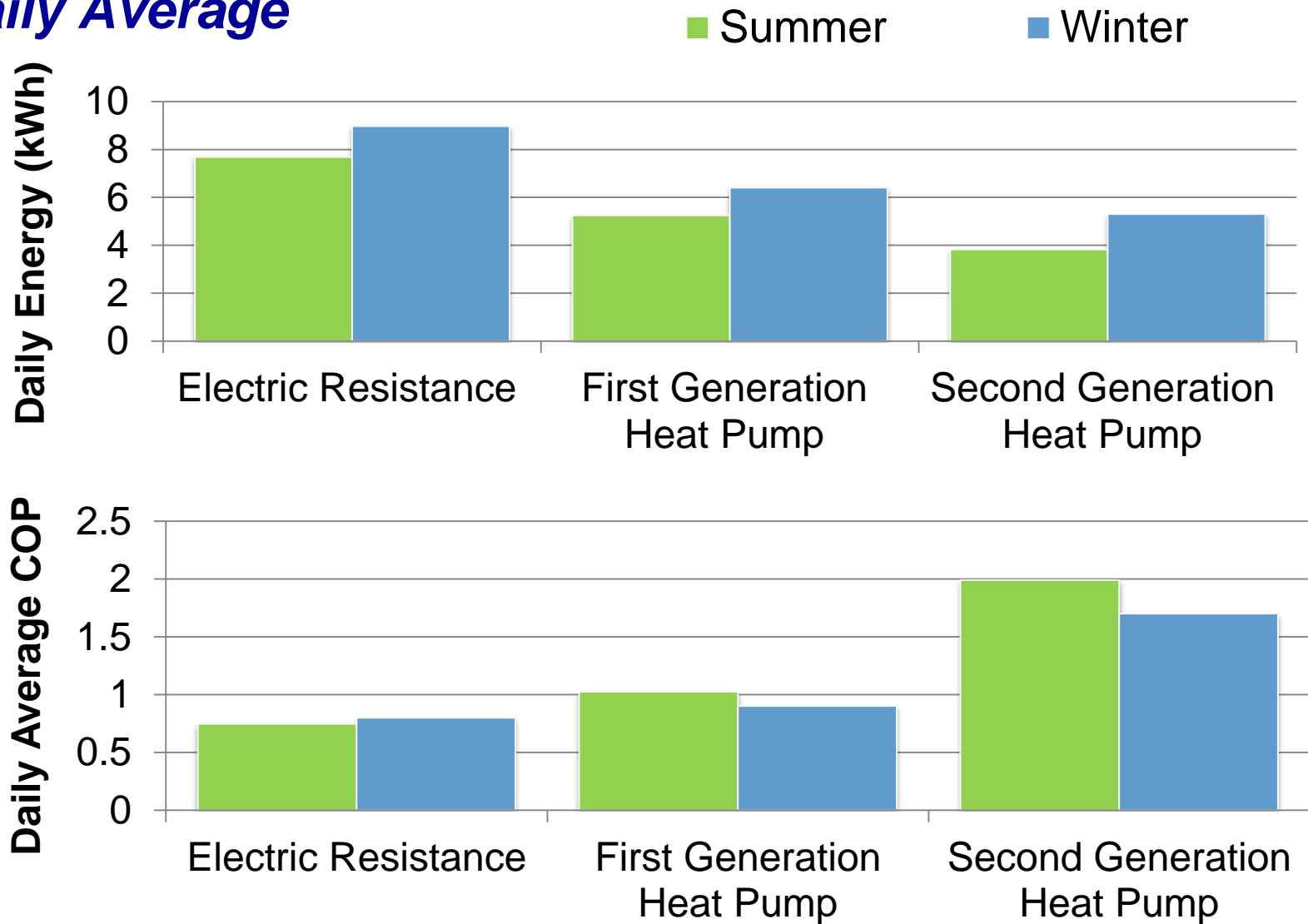
# Average Water Use



*Results may vary in the final report due to variations in filtering and analysis methods.*

# Performance Data

## Daily Average



Results may vary in the final report due to variations in filtering and analysis methods.

# Next Steps

1. Data collection is complete.
2. Analysis is in progress with results available in March.

# Contact Us



Wayne Marshfield  
DCEC

(607) 746-9284

[wayne.marshfield@dce.coop](mailto:wayne.marshfield@dce.coop)

Greg Pedrick  
NYSERDA

(518) 862-1090, x3378

[gap@nyserda.ny.gov](mailto:gap@nyserda.ny.gov)

Ben Ealey  
EPRI

(865) 218-8117

[bealey@epri.com](mailto:bealey@epri.com)



# Together...Shaping the Future of Electricity