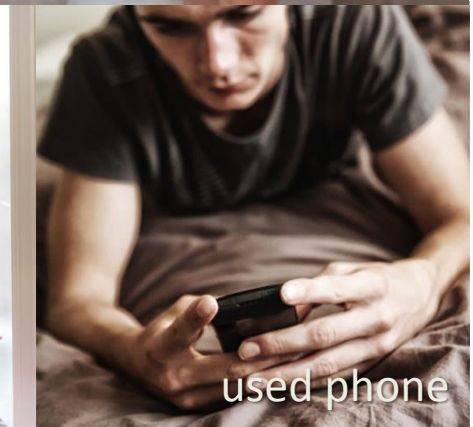


Have You Or A Family Member Ever _____ While Waiting For The Shower To Get Warm?



Most People Multitask – Behavioral Waste

Behavioral waste occurs when bathers use their time comfortably and efficiently while waiting for hot water to reach the shower. Activities include brushing teeth, using the washroom, picking out clothes, drinking coffee ...



71%

do other stuff while waiting for hot water to reach the shower

Most People Multitask – Behavioral Waste

Behavioral waste occurs when bathers use their time comfortably and efficiently while waiting for hot water to reach the shower. Activities include brushing teeth, using the washroom, picking out clothes, drinking coffee ...



71%

do other stuff while waiting for hot water to reach the shower

52%

do more than one thing as part of their warm-up routine

Core Product Lines

ShowerStart® TSV

- Eliminates behavioral waste
- Universal compatibility
- Solid brass construction
- Easy installation



Showerhead

+ ShowerStart TSV

- Eliminates behavioral waste
- Pressure compensating performance
- Multiple spray patters and flow rates
- Exceeds WaterSense standard



Auto-Diverting Tub Spout

+ ShowerStart TSV

- Reduces warm-up waits by 2x or more
- Auto diverts hot water to the showerhead once it arrives
- Anti-leak tub spout design
- Includes WaterSense showerhead or handshower



Handshower

+ ShowerStart TSV

- Eliminates behavioral waste
- Pressure compensating performance
- Multiple spray patters and flow rates
- Exceeds WaterSense standard
- Stainless steel hose
- Brass fitting



Standard Showerheads Also Available

Single & Multifunction Showerheads

- Multiple spray patterns and flow rates
- Rub clean spray nozzles
- Pressure compensating flow regulation



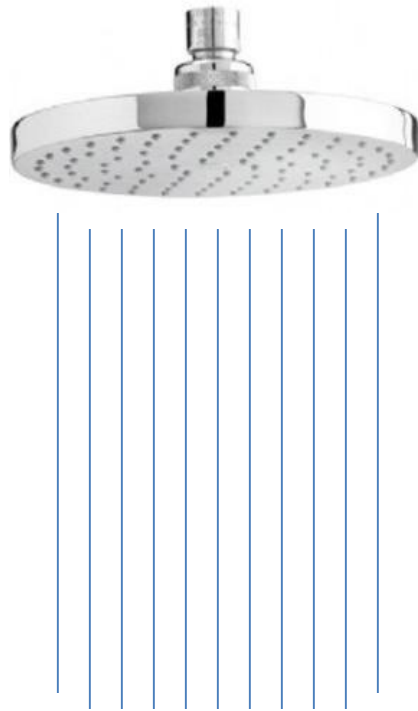
Single & Multifunction Handshowers

- Multiple spray patterns and flow rates
- Rub clean spray nozzles
- Pressure compensating flow regulation
- 59" stainless steel hose and shower arm mount



20% - 30% Of Shower Is Wasted Before Bathing Begins

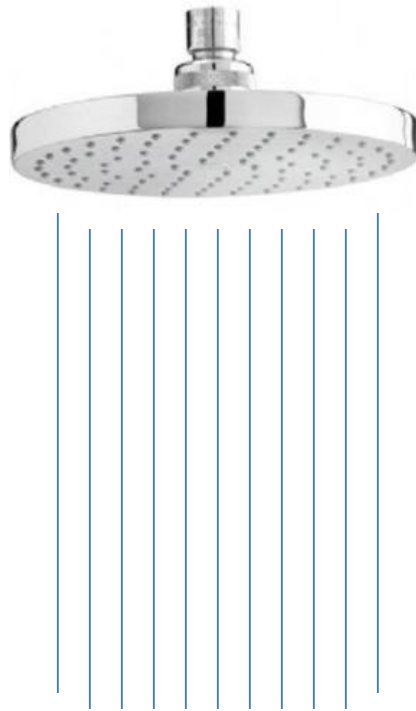
In 2004 and 2011 papers Jim Lutz at Lawrence Berkeley National Lab indicates that shower warm-up waste falls in the 20% - 30% range.



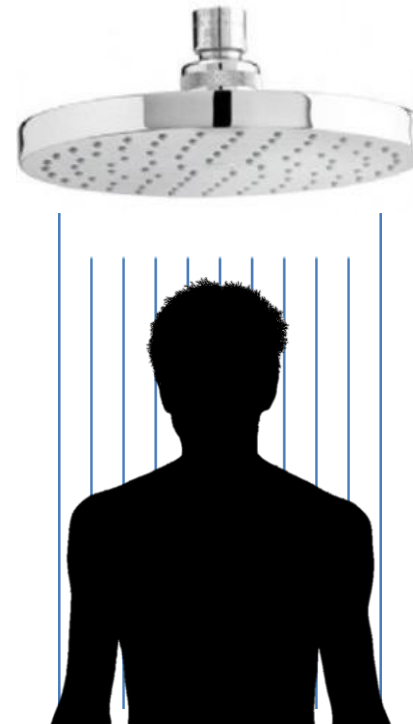
~ 2 Minutes
Of This
WARM-UP WASTE

20% - 30% Of Shower Is Wasted Before Bathing Begins

In 2004 and 2011 papers Jim Lutz at Lawrence Berkeley National Lab indicates that shower warm-up waste falls in the 20% - 30% range.



~ 2 Minutes
Of This
WARM-UP WASTE



Before 6 Minutes
Of This

A System Solution For Saving **LOTS** of Water & Energy

What Happens When You Marry A TSV To A Tub Spout



Most Convenient & Efficient Showering Solution Ever

AUTO-DIVERTING TUB SPOUT SYSTEM

Most Convenient

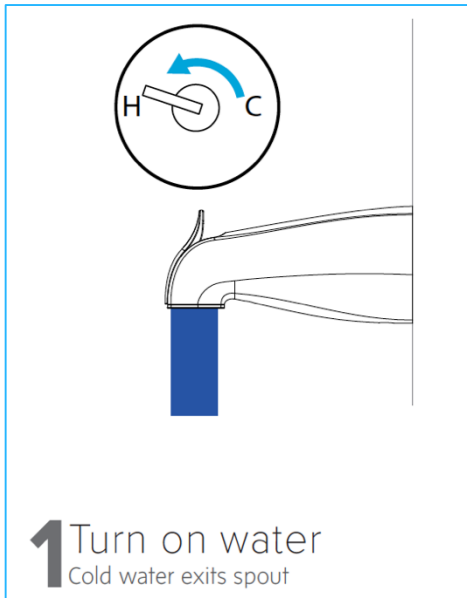
- **Greatly Reduces Wait Times**
Structural waste is purged significantly faster because of higher flow rates and fluid dynamics
- **Automatically Diverts Hot Water To Showerhead**
Sends hot water to showerhead once it arrives at tub spout

Most Efficient

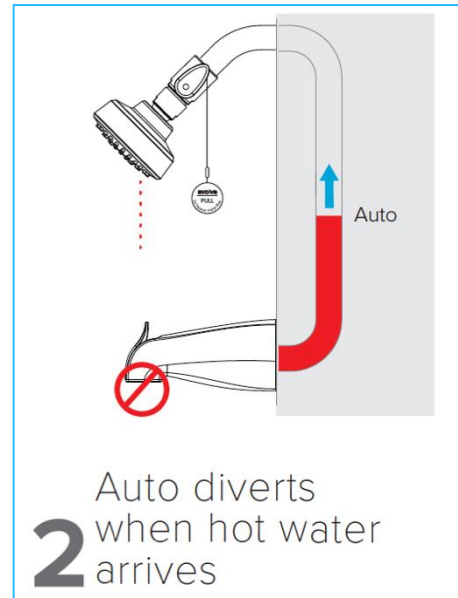
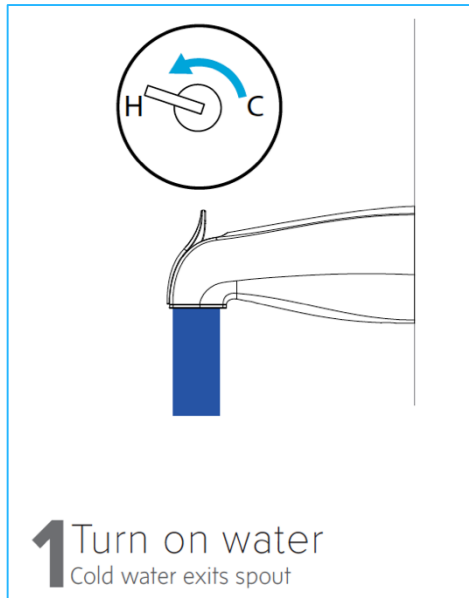
- **Reduces Structural Waste**
Structural waste volume is reduced as a result of “plug flow” at higher flow rates
- **Eliminates Behavioral Waste**
Stops hot water from running down drain when user is away from shower during warm-up
- **Anti Leak Tub Spout Design**
Tub spout leaks during shower can waste up to 5.5 gallons or more per shower
- **More Efficient Shower**
A specialized WaterSense showerhead is part of the system



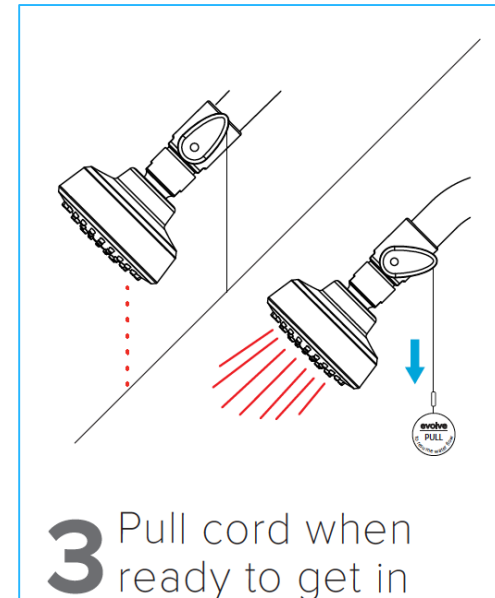
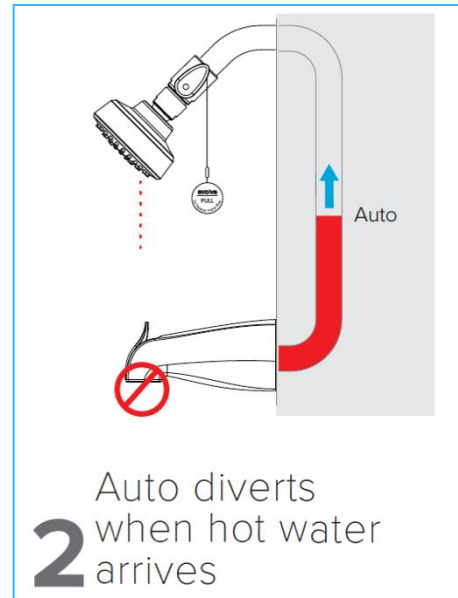
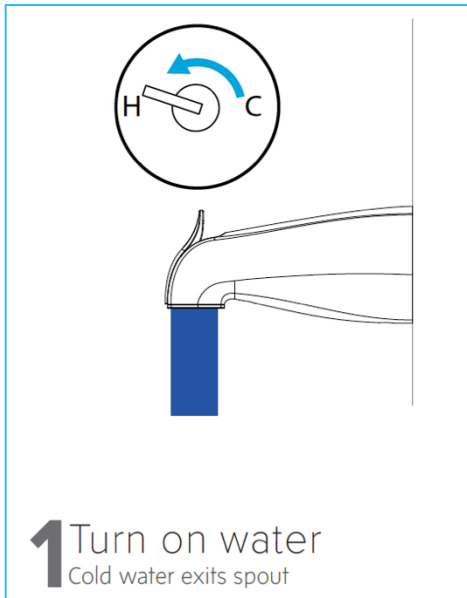
Auto-Diverting Tub Spout + TSV



Auto-Diverting Tub Spout + TSV



Auto-Diverting Tub Spout + TSV



Unique Water & Energy Savings Opportunities



.4 GALLONS
SAVED

Structural Waste

Unique Water & Energy Savings Opportunities



.4 GALLONS
SAVED

Structural Waste



5.1 GALLONS
SAVED

Behavioral Waste

Unique Water & Energy Savings Opportunities



.4 GALLONS
SAVED

Structural Waste



5.1 GALLONS
SAVED

Behavioral Waste



5.0
GALLONS
SAVED

High-Efficiency
Shower Options

Unique Water & Energy Savings Opportunities



.4 GALLONS
SAVED

Structural Waste



5.1 GALLONS
SAVED

Behavioral Waste



UP TO 5.0
GALLONS
SAVED

High-efficiency
Shower Head



4.5
GALLONS
SAVED

Anti-Leak Tub Spout

SAVE UP TO 15 GALLONS SAVED PER SHOWER

Auto-Diverting Tub Spout Annual Savings Estimates



Gallons



8,687 GALLONS (**HOT** WATER)

Therms



18 – 32 THERMS

kWh



415 – 740 kWh