



Light Duty Commercial HPWH CHP-120

Presented at ACEEE Hot Water Forum
Nashville, TN. March 11, 12, 13, 2019



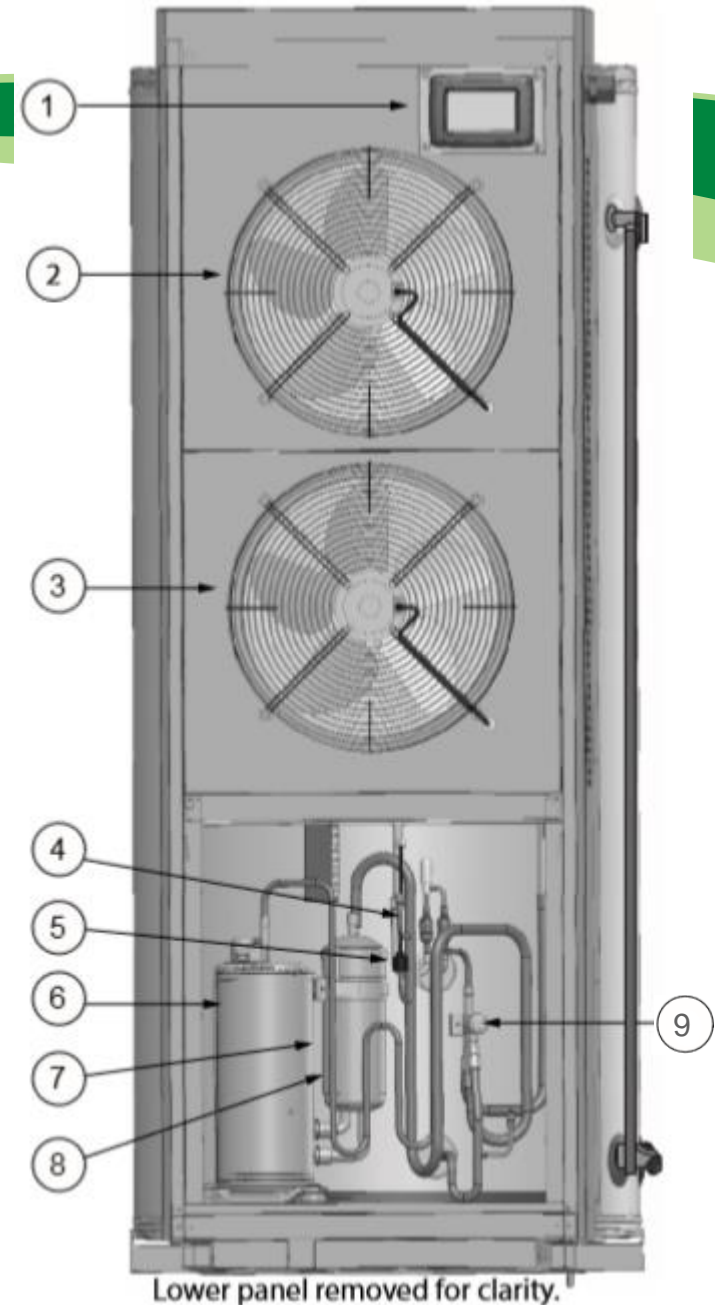
Commercial Heat Pump Water Heater

- 3.55hp (2.65kW) commercial application heat pump water heater
- 3 Modes of Operation
 - Efficiency (150°F), Hybrid (150°F), Electric (180°F)
- Internal product testing completed
 - First hour delivery exceeds 150 GPH in all modes
 - Operation Noise Level : 59 db (A)
 - 4.2 COP
- Certification testing to UL 14.53 and 1995 completed
- Qualifies for **ENERGY STAR®** (COP ≥ 3.6)
- Approx.. ¾ Ton Cooling/Dehumidification
- Integrated Design for ease of installation



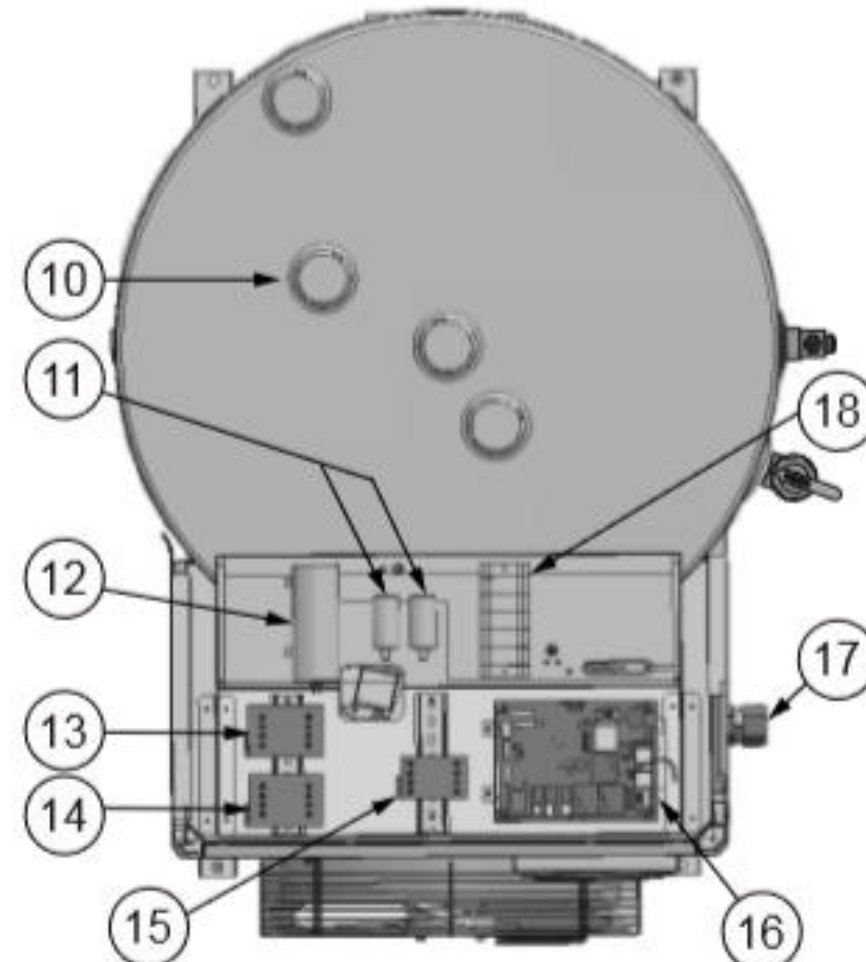
CHP-120

1. LCD User Interface
2. Upper Evaporator Fan
3. Lower Evaporator Fan
4. Suction Temp Sensor
5. Electronic Expansion Valve
6. Compressor
7. Accumulator
8. Discharge Temp Sensor
9. 4 Way Valve



CHP-120

- 10. Anode
- 11. Capacitor Upper/Lower Fans
- 12. Capacitor Compressor
- 13. Relay Upper Element
- 14. Relay Lower Element
- 15. Relay Compressor
- 16. Main Control Board
- 17. Electrical Supply Connector
- 18. Terminal Block



Control panels removed for clarity.

Application Considerations

- 100 amp electric service
- Light duty commercial applications
 - 100 – 600 Gallons per Day
- Recommended 3,200 cu/ft air space
- 100 amp electric service needed
- 70”H X 31”W X 39”D
- 12 kWh resistive input
- HP + Resistive approx. Max Input 20 kWh
- Integrated Design Pre Charged Refrigeration System



Commercial Heat Pump Water Heater

- Applications 100 – 600 Gallons Per Day
- QS Restaurants
- Small Fine Dining Restaurants
- Medical Clinics
- Veterinary Clinics
- Comfort Stations
- Gas Station Rest Stops
- Many Others.....

