



Innovative Non-Invasive Load Control

Kit Hagen – kit@armadapower.com

Presented at the 2019 ACEEE Hot Water Forum

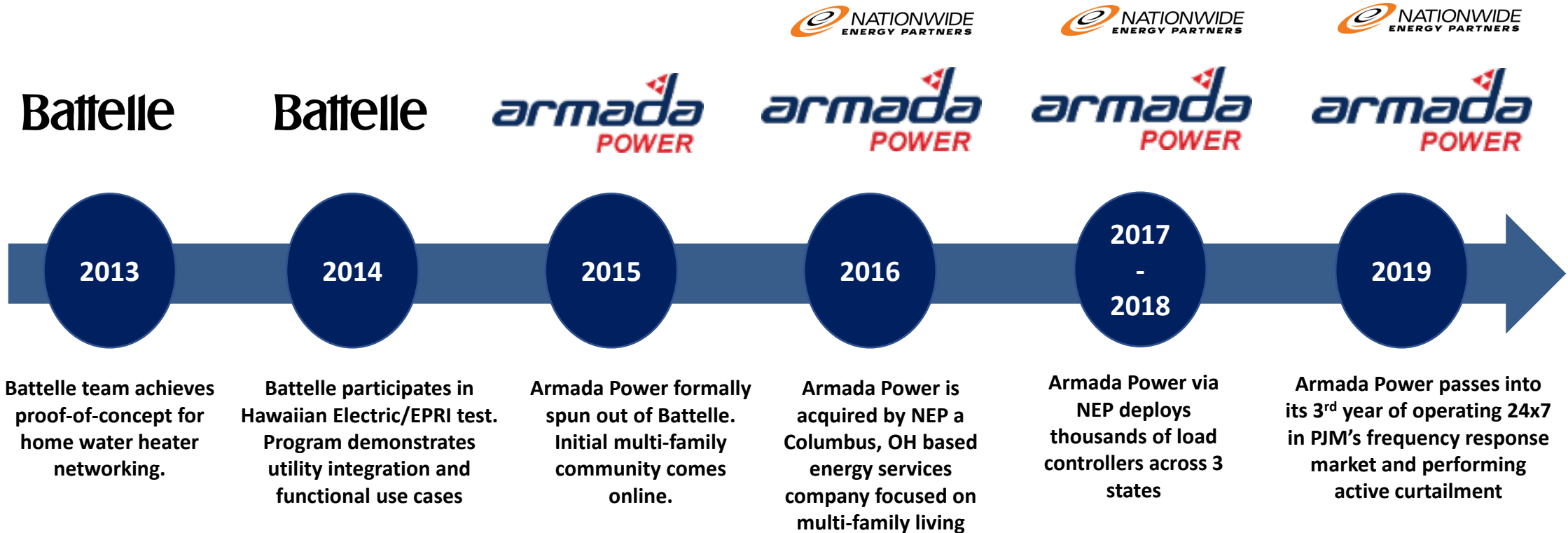
INTRODUCTION

Armada Power is a patented behind the meter solution that turns an electric water heater into an energy storage and grid balancing asset. Armada's unique technology intelligently aggregates micro loads to create a scalable, non-wires alternative enabling non-invasive demand response, frequency management, voltage control and circuit relief solutions.

We turn an electric water heater into a low cost storage device with no impact on comfort



EVOLUTION OF ARMADA POWER

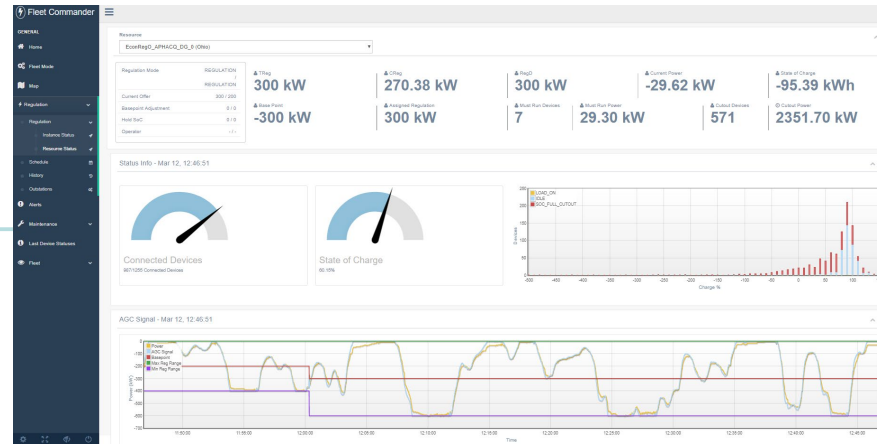


ARMADA SOLUTION STACK



Hardware

- LCS 2100 load controller
- Two-way, real-time communications & control device
- Available in wifi mesh or cellular communications configurations
- UL certified, 20 year tested life
- Monitoring temperatures, state of charge, tank status, LCS status, etc.
- Onboard metering & computing chipset allows remote updating & hands-off operations
- Can be installed as a retro fit to existing water heater or fully integrated into new water heater
- Tank is not pierced or disrupted. Tank UL certification remains intact. Installation routes power supply through LCS & takes about 30 mins



Software

- Patented AI based fleet control, decisioning & alerting
- Cloud-based (AWS) software
- Monitoring temperatures, state of charge, tank status, LCS status, etc.
- Supports multiple hierarchies: fleet level, across zones, down to individual units
- Web portal control & dashboard interface
- Managing real-time, two-way communications with LCS devices
- Scalable to millions of LCS devices



SCADA Integration

- SCADA system agnostic
- Full integration with PJM real-time market SCADA system
- Requires 30ms response times
- Two-way delivery of data (market signals down, meter data up)
- Currently supporting 150 different signaling & control scenarios

ARMADA APPLICATIONS

Multi-Family (MDU)

Utility (IOU, Co-op)

Commercial & Industrial

Solutions

Electric water heater fleet management

- Intelligent load control via hardware/software mix
- Non-invasive resident experience
- Generates net income and operational efficiencies

Smart Apartment Solution

- Fleet control and monetization of IoT devices
- Data and telemetry for operations and maintenance actions

Advanced demand response (Non-invasive)

T&D system enhancer

- Local feeder congestion relief
- Real time load analysis for circuit reconfig
- Automated voltage deviation response
- End of line voltage measurement
- Restoration load prioritization
- Primary frequency balancing
- Renewables firming
- Microgrid load control and stability support

VFD management and monetization

- End use case requires the load to be interruptible

VFD Failure detection

- Identification of power fluctuations indicating degradation of VFD

Non-VFD processes

- possibility of providing capital for VFD via ABB partnership

Target/GTM

Target: Property owners and managers

GTM: Armada sells direct

Target: IOUs/Co-ops

GTM: Armada sells via channel partners

Target: Applications with stored energy such as water treatment, waster water facilities, variety of industrial pumps, refrigeration compressors

GTM: Armada sells via channel partners

Monetization

1. Energy market participation
2. Demand cost reduction
3. Operational cost reduction
4. Predictive maintenance
5. Carbon benefits

1. Regulatory programs (EE, DR, Grid mod)
2. Cost reduction (deferred circuit upgrades)
3. System efficiency gains
4. Carbon benefits
5. MDU acquisition programs

1. Energy market participation
2. Demand cost reduction
3. Predictive maintenance
4. Carbon benefits

ARMADA RESULTS TO DATE

- ✓ 5,256,000 Mwh of frequency regulation provided in market
- ✓ 96% Reg D performance score believed to be the highest in PJM
- ✓ 10 Mw of local curtailment performed
- ✓ 8 outage restoration assistance events
- ✓ 750m water heater data points collected
- ✓ 150+ maintenance issues identified and solved
- ✓ 11 patents granted, 3 pending
- ✓ 4,000 tons of carbon offset
- ✓ 0 cold shower complaints in 2 years of operation

15 min interval meter reads from an Armada community during CLP event

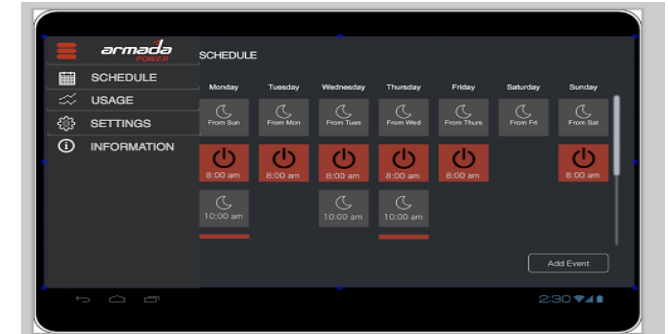
Time	Actual Demand	Armada Shave	Possible Demand
13:45	0	0	0
14:00	0	0	0
14:15	0	0	0
14:30	1310	675	1985
14:45	1540	675	2215
15:00	1744	675	2419
15:15	1937	675	2612
15:30	2191	675	2866
15:45	2527	675	3202
16:00	2483	675	3158
16:15	2410	675	3085
16:30	2151	675	2826
16:45	1996	475	2471
17:00	2060	175	2235
17:15	1803	0	1803
17:30	1619	0	1619
17:45	1531	0	1531

- ← Armada sees restoration, reduces load immediately
- ← Community Ramping
- ← Community sets Peak
- ← Armada can see Peak
- ← Armada waits to get under Peak
- ← Armada puts water heaters back in

ARMADA LESSONS

1. Monetizing loads is difficult. Solutions have to be inexpensive, accurate, and flexible.
2. You can run residential curtailment events that don't impact comfort and you can drive program subscription levels by doing so.
3. The splint incentive can be solved, multi-family residents can be brought into the energy solution fold.
4. Markets can be difficult to work with, let someone with experience help.
5. Make installation super easy. Don't pierce the tank.
6. Be accurate. Constantly measure, don't guess.
7. Think broadly about the next generation of load control.

Armada Resident App



Armada Commercial Portal

The screenshot shows the 'Fleet Commander' web interface. It features a table of events with columns for 'Site', 'State', 'Event Name', 'Start Time', 'Last Mod Time', and 'Action'. The table contains several rows of event data, each with a 'View' and 'Edit' button in the 'Action' column.

Site	State	Event Name	Start Time	Last Mod Time	Action
ELBENT_HALL1E	ACKNOWLEDGED		07/20/19 10:00	07/20/19 10:00	View Edit
ELBENT_HALL1E	ACKNOWLEDGED		07/20/19 12:18:12	07/20/19 12:18:12	View Edit
ELBENT_HALL1E	ACKNOWLEDGED		07/20/19 12:41:07	07/20/19 12:41:07	View Edit
ELBENT_HALL1E	ACKNOWLEDGED		07/20/19 14:17:19	07/20/19 14:17:19	View Edit
ELBENT_HALL1E	ACKNOWLEDGED		08/12/19 17:00:00	08/12/19 17:00:00	View Edit
METER_OUR_DABOTSP	ACKNOWLEDGED	1000-1000-1000	08/12/19 17:00:00	08/12/19 17:00:00	View Edit
ELBENT_HALL1E	ACKNOWLEDGED		08/12/19 18:00:00	08/12/19 18:00:00	View Edit
ELBENT_HALL1E	ACKNOWLEDGED		08/12/19 17:41:19	08/12/19 17:41:19	View Edit
ELBENT_HALL1E	ACKNOWLEDGED		08/12/19 20:00:00	08/12/19 20:00:00	View Edit

Thank You



Kit Hagen

PRESIDENT

KIT@ARMADAPOWER.COM