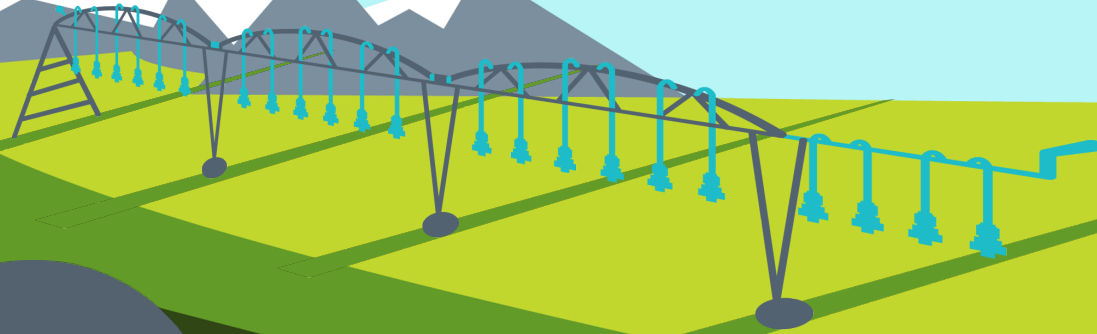


NAVIGANT

Bonneville  
POWER ADMINISTRATION



# Harvesting Savings in the Agriculture Sector

ACEEE Rural Energy Conference  
October 22, 2018

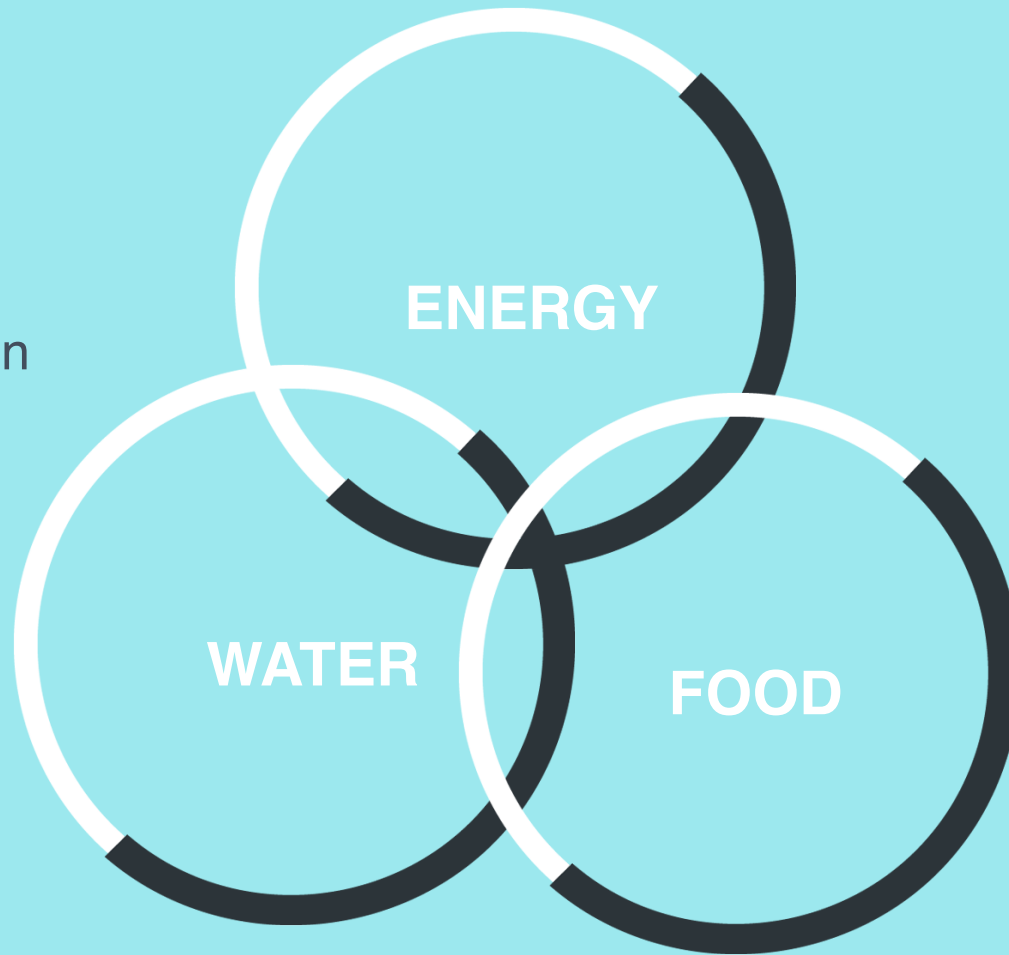
**Emily Merchant**  
*Navigant Consulting*

**Carrie Cobb**  
*Bonneville Power Administration*



**80%**

Percent of water in the US that is used by agriculture



**2%**

Percent of energy in the US that is used by agriculture





**Grocery**  
61 billion kWh



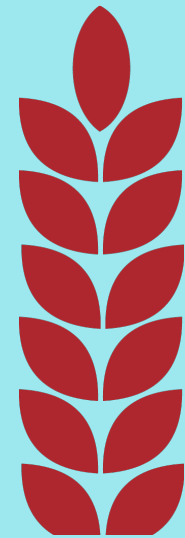
**Restaurant**  
82 billion kWh



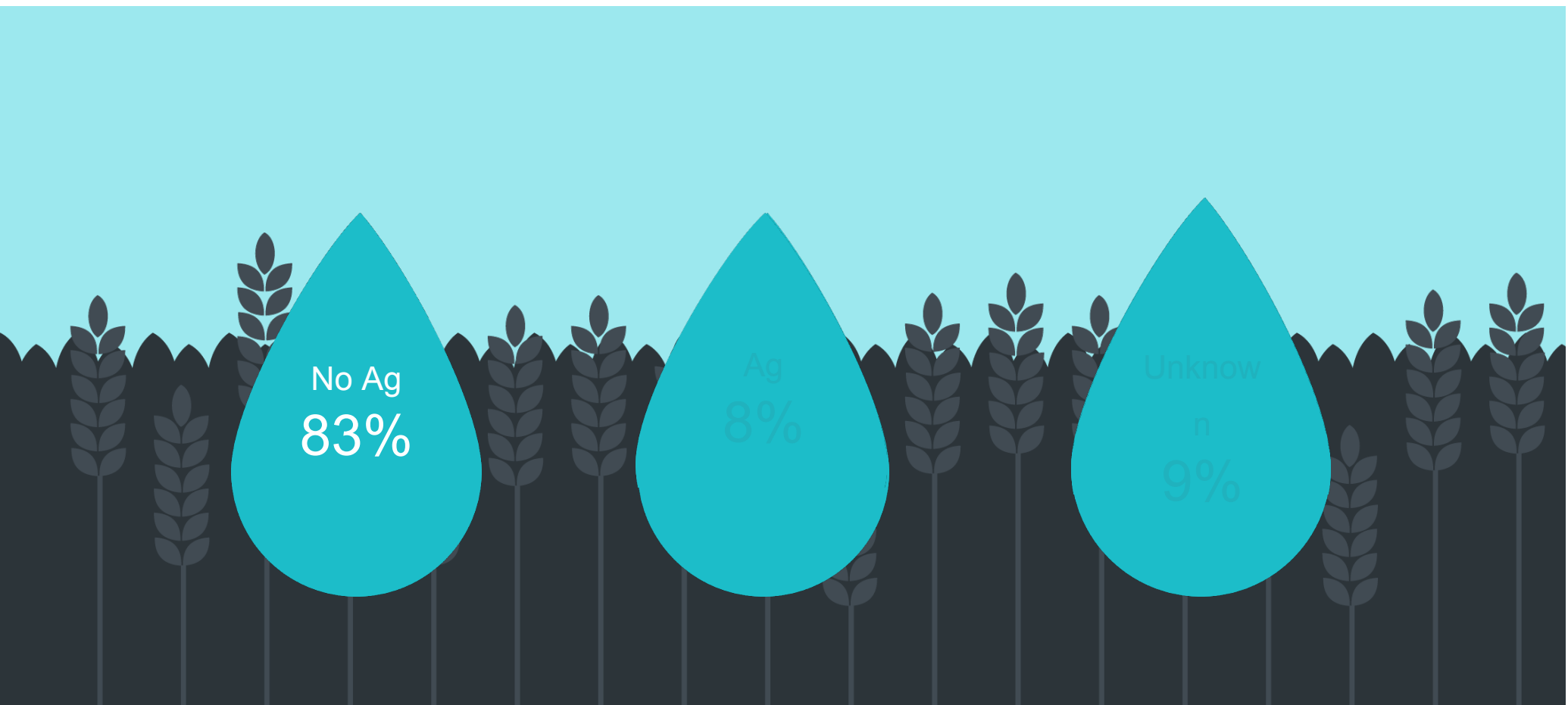
**Agriculture**  
103 billion kWh



**Health Care**  
107 billion kWh



8% of electricity used in the  
commercial sector is used by  
agriculture



No Ag  
83%

Ag  
8%

Unknown  
n  
9%

EIA reviewed 329 energy efficiency portfolio evaluation reports, only 8% had agriculture service offerings

**Columbia  
River  
Basin**



OREGON

IDAHO

MONTANA

- BPA Service Area
- Other Utilities' Service Areas
- Agriculture

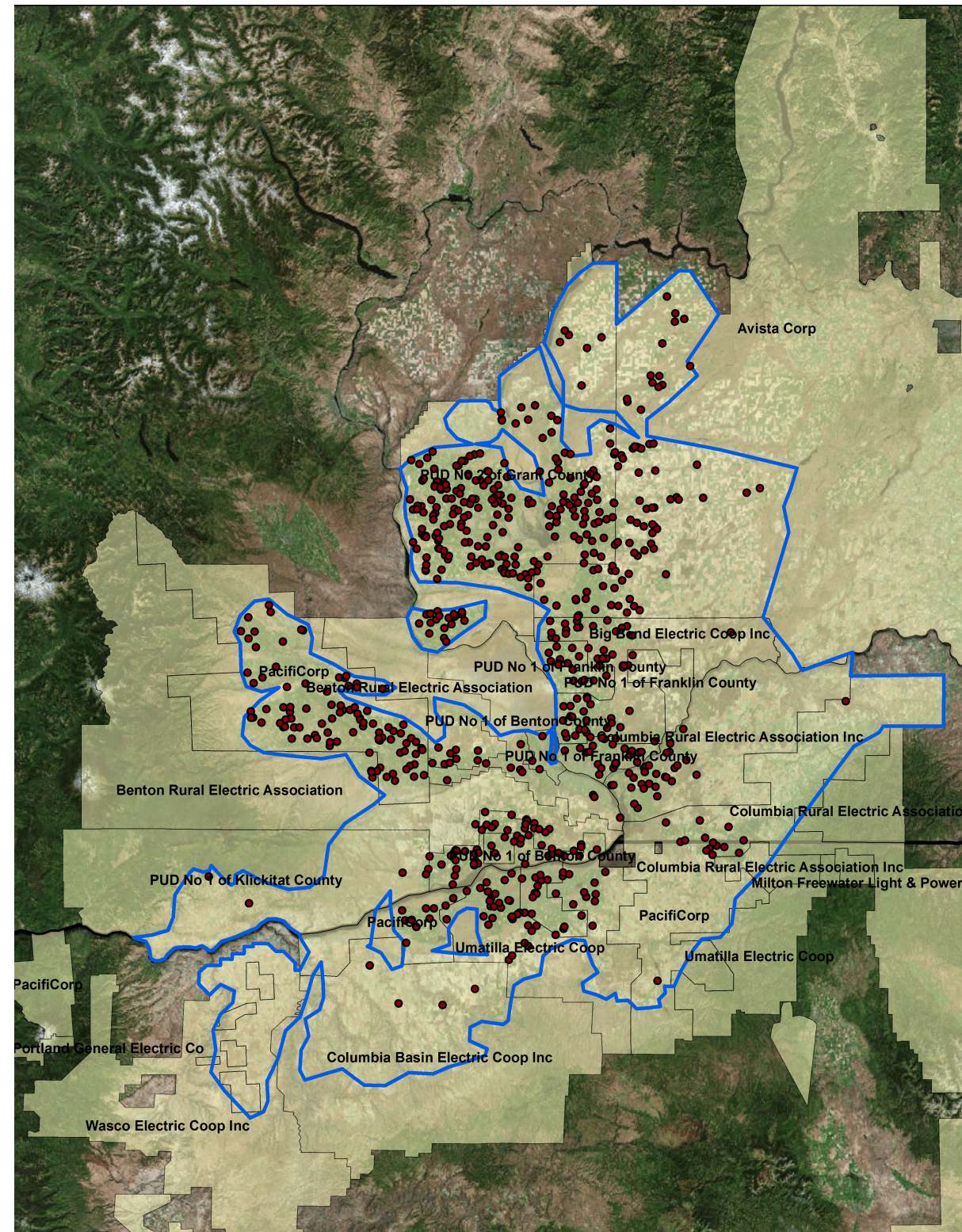
10%

# Our Objective





# How we defined the region

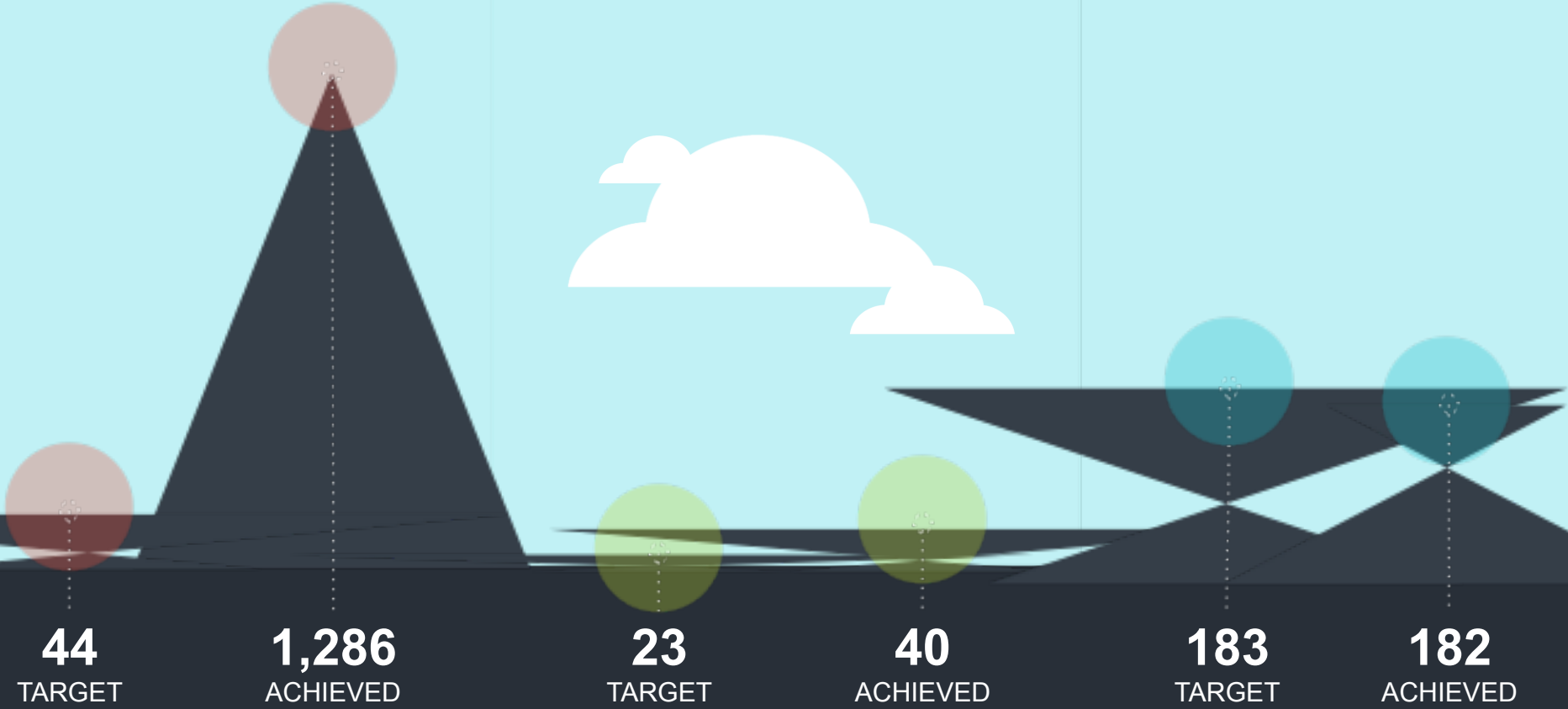


# The sample size of each group was...

## SIS Program Fields

## SIS Non-Program Fields

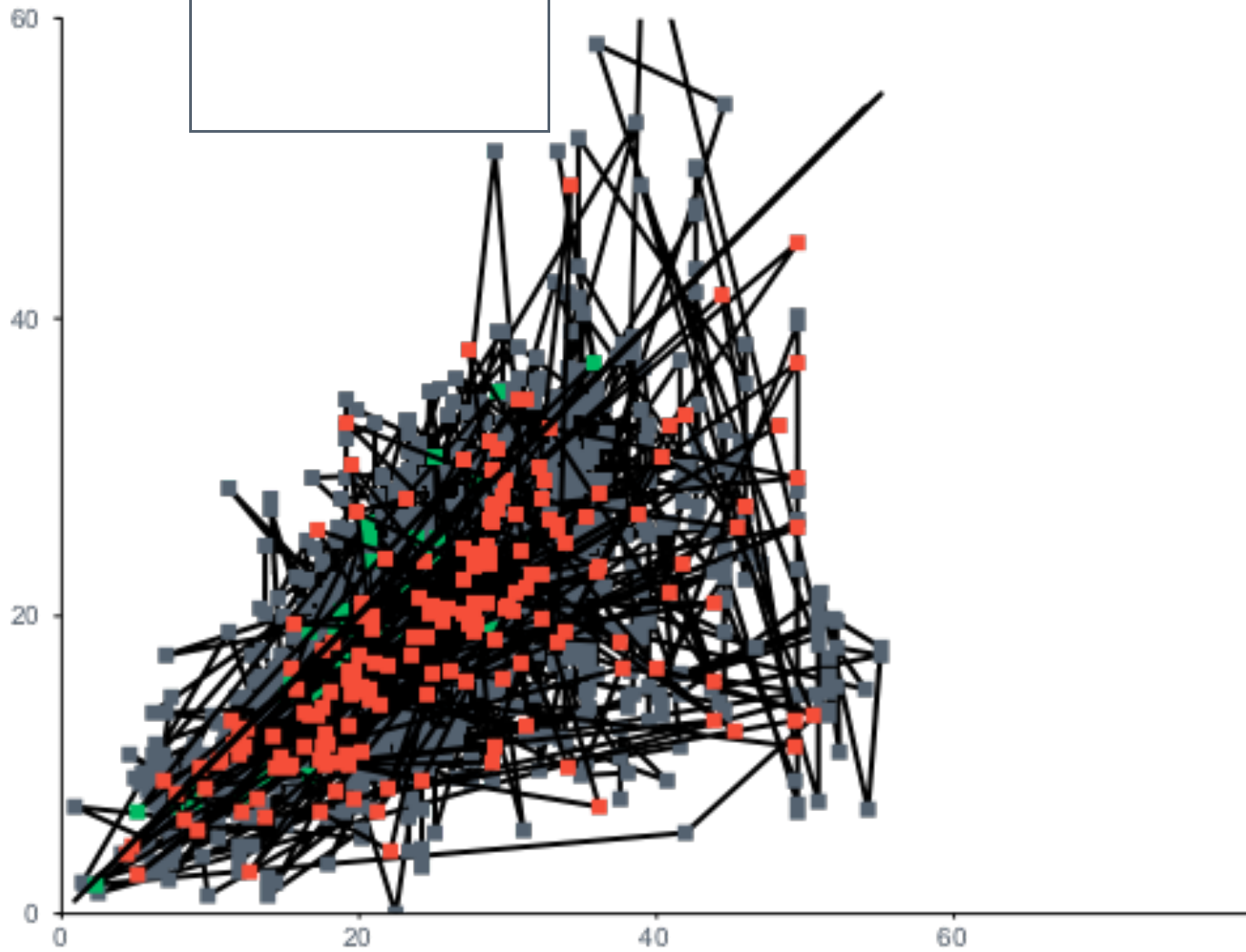
## Non-SIS Fields



**250** FIELDS TARGETED

**1,508** FIELDS ACHIEVED

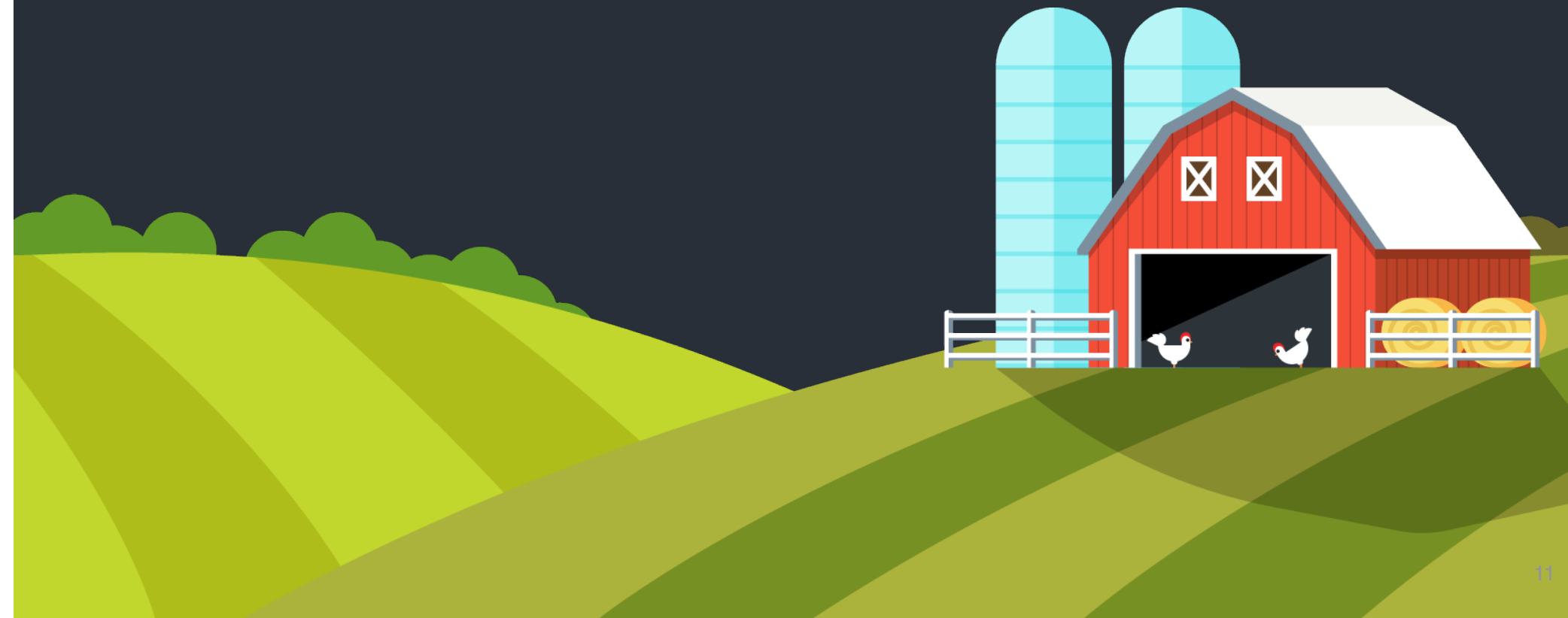
All Fields in Study





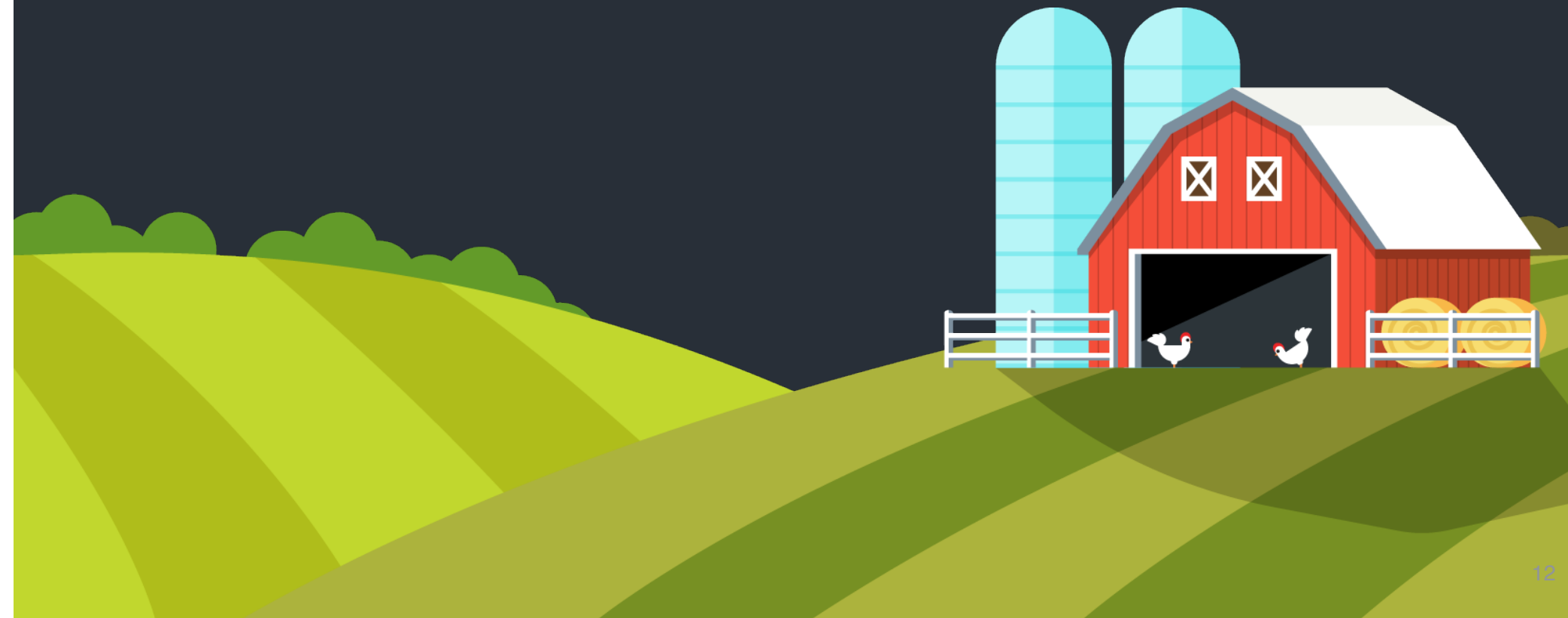
## Takeaway No. 01

Evaluation, measurement, and verification is important



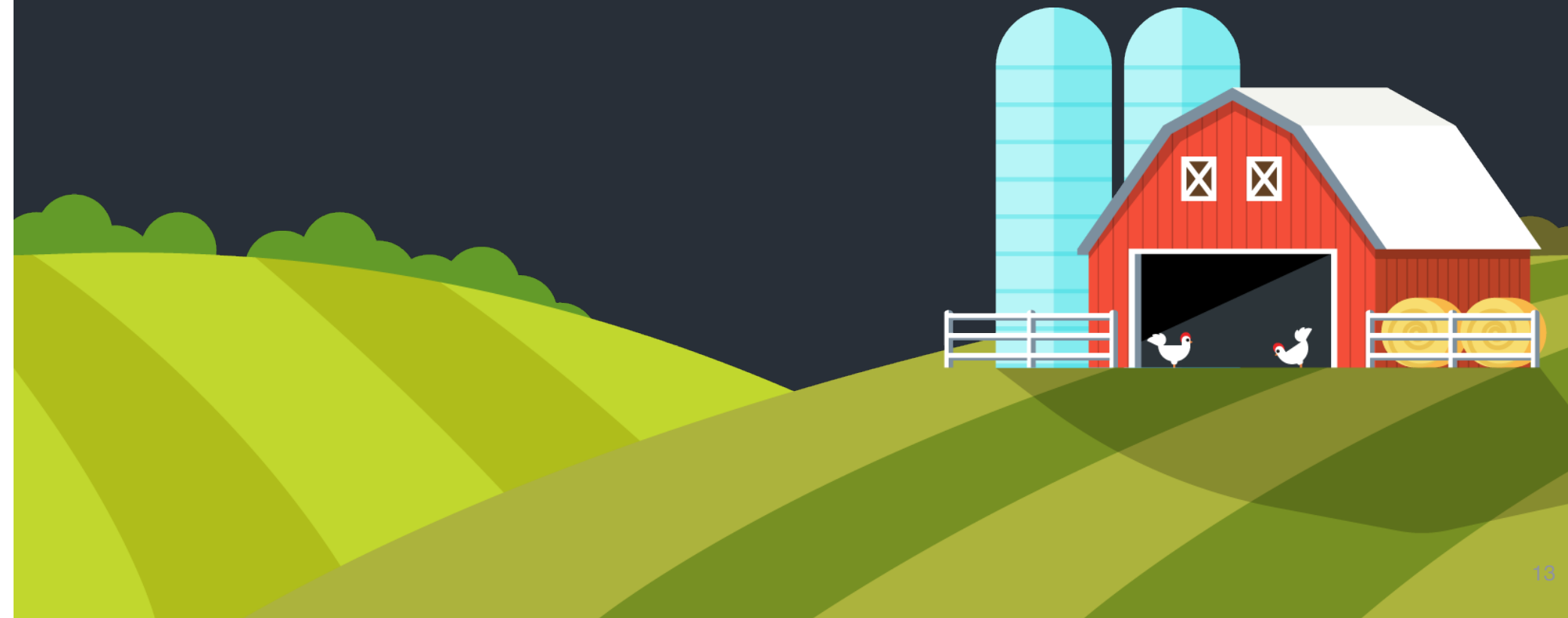
## Takeaway No. 02

Hard to reach customers are still reachable



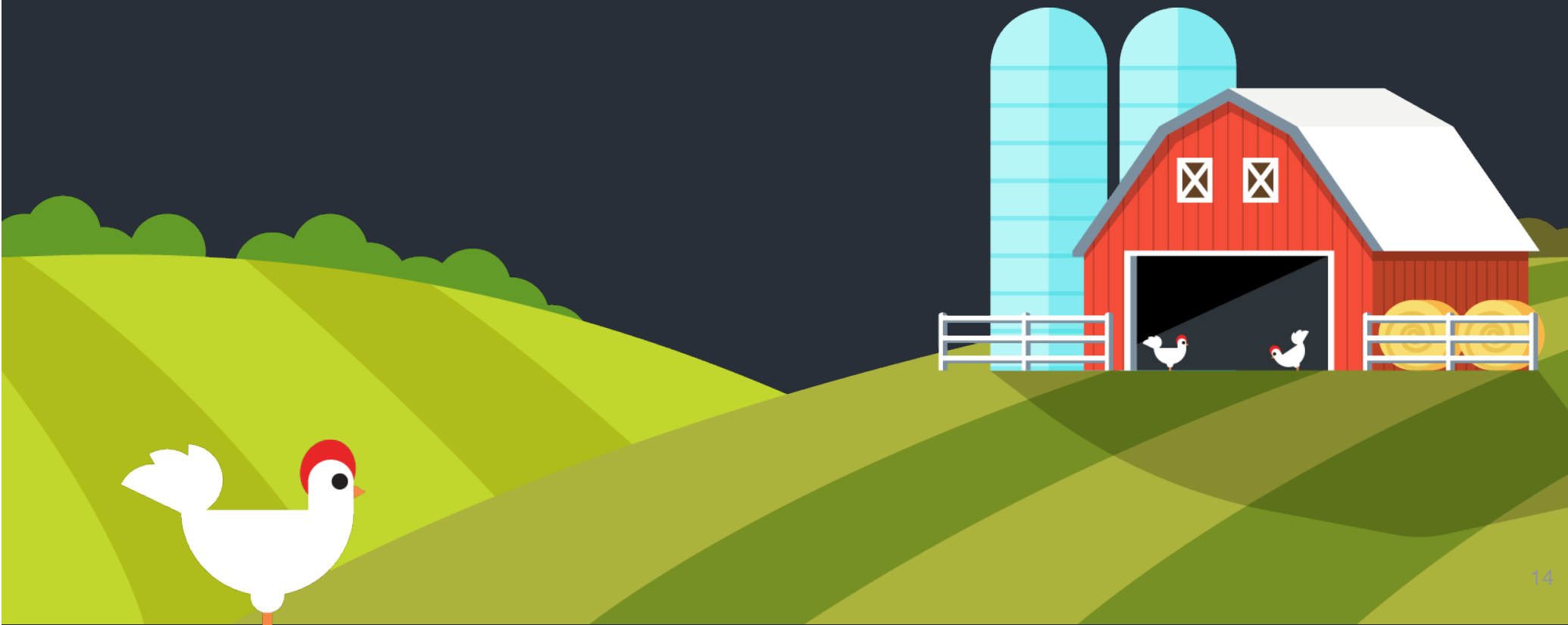
## Takeaway No. 03

Adoption of efficient technologies depends on trust



## Takeaway No. 04

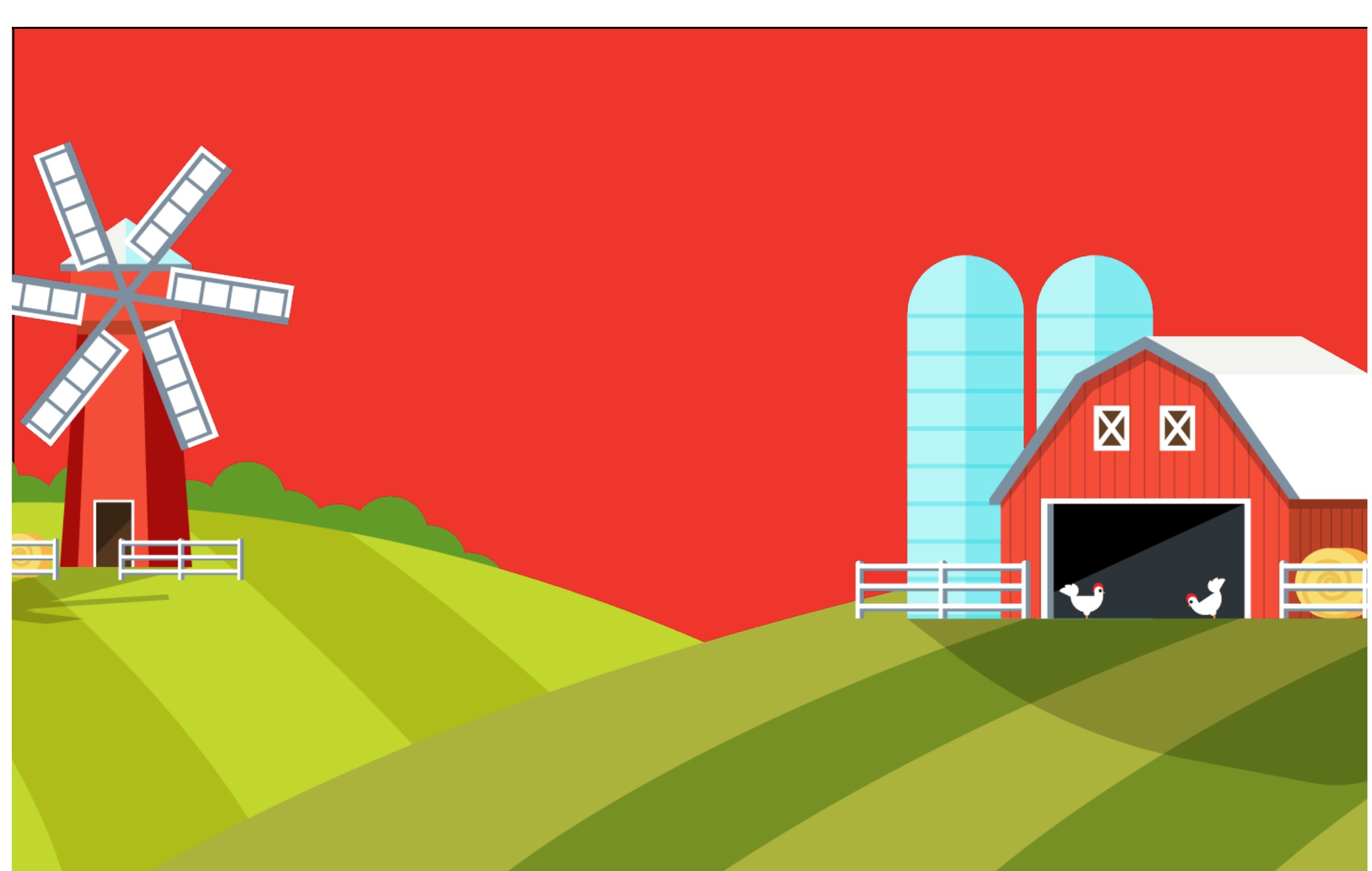
Real-time QC is imperative




## Takeaway No. 05

Engage stakeholders early and often





What's next?



The future  
is data

A stylized illustration of a red tractor pulling a red trailer. The tractor is on the right, and the trailer is on the left. The trailer contains contact information. The background is a light blue sky with stylized teal flowers and a green field. The text "Thank you!" is written above the tractor's cab.

Thank you!

**Contact us**

**Emily Merchant, *Navigant Consulting***  
emily.merchant@navigant.com  
303.728.2538

**Carrie Cobb, *Bonneville Power Administration***  
clcobb@bpa.gov  
503.230.4985