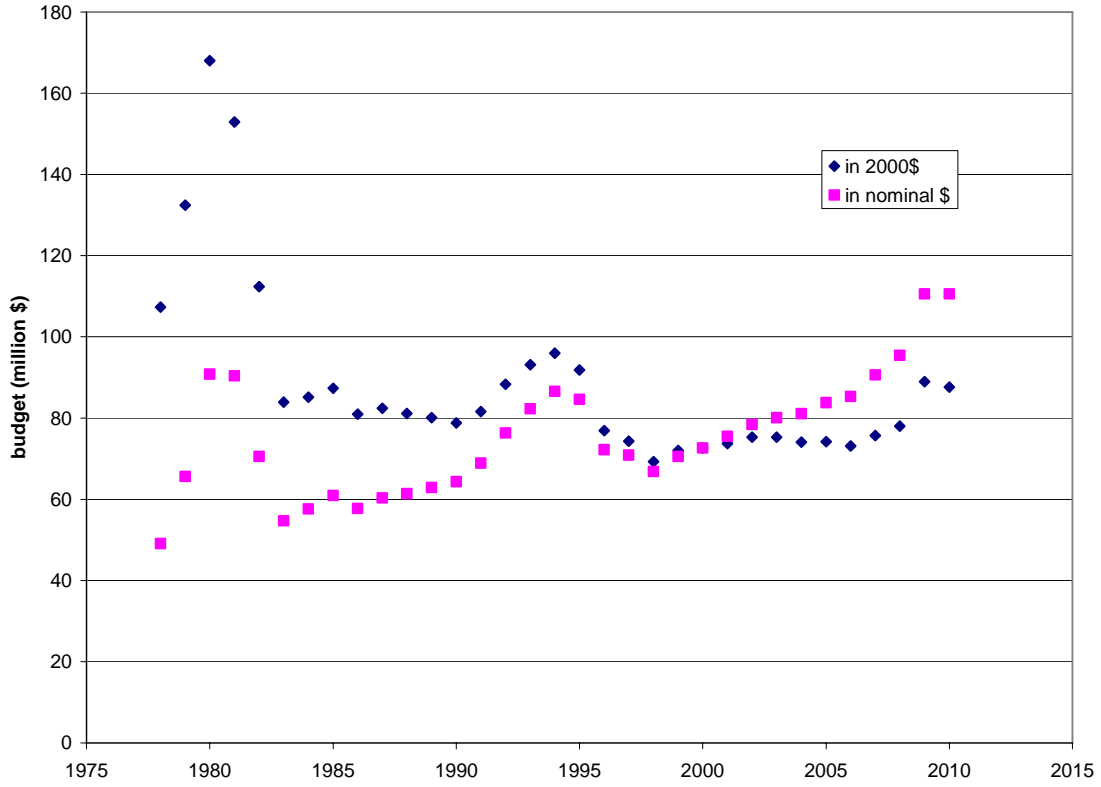


### EIA's Appropriations History, 1978–2010



**EIA Annual Appropriation (in million \$)**

	Administration Budget Request (in nominal \$)	EIA Annual Appropriation (in million \$)		
		in nominal \$	in Constant 2000 \$	Implicit Price Deflator (2000 = 1)
1978		49.1	107.306	0.45757
1979		65.6	132.397	0.49548
1980		90.8	168.014	0.54043
1981		90.4	152.912	0.59119
1982		70.5	112.394	0.62726
1983		54.7	83.887	0.65207
1984		57.6	85.138	0.67655
1985		60.9	87.358	0.69713
1986		57.7	80.982	0.7125
1987		60.3	82.382	0.73196
1988		61.4	81.116	0.75694
1989		62.9	80.070	0.78556
1990		64.3	78.809	0.8159
1991		68.9	81.593	0.84444
1992		76.3	88.326	0.86385
1993		82.3	93.120	0.88381
1994		86.6	95.946	0.90259
1995		84.6	91.851	0.92106
1996		72.2	76.930	0.93852
1997		70.9	74.308	0.95414
1998		66.8	69.243	0.96472
1999		70.5	72.036	0.97868
2000		72.6	72.600	1
2001		75.508	73.739	1.02399
2002		78.437	75.285	1.04187
2003	82.801	80.087	75.267	1.06404
2004	80.111	81.1	74.090	1.09462
2005	85	83.819	74.154	1.13034
2006	85.926	85.314	73.120	1.16676
2007	89.769	90.653	75.660	1.198
2008	105.095	95.460	77.976	1.224
2009	110.595	110.595	88.929	1.244
2010	113.058	110.595	87.638	1.262

Sources: all found at <http://www.cfo.doe.gov/crorg/cf30.htm>

- FY 2001 budget request,
- FY 2002 budget request
- FY 2003 request
- FY 2005 request
- FY 2006 request
- FY 2007 request
- FY 2009 request
- AEO 2010, Table 20